

Navicat

Data Modeler

Version 3 User Guide



Table of Contents

Chapter 1 - Introduction	4
About Navicat Data Modeler	4
Installation	5
Registration	5
Migration / Upgrade	7
End-User License Agreement	7
Chapter 2 - User Interface	14
Main Window	14
Chapter 3 - Collaboration	15
About Collaboration	15
Manage Cloud	15
Navicat Cloud	15
On-Prem Server	17
Push Synchronization	19
Cache and Local Copies	20
Projects	20
Work With Projects	20
Manage Members	21
Chapter 4 - Model	23
About Model	23
Create Model	25
Chapter 5 - Physical Model	27
About Physical Model	27
Add Databases / Schemas to Physical Model	27
Add Tables to Physical Model	28
Add Views	30
Add Views to Physical Model	30
Work with View Builder (Available only in Non-Essentials Version)	31
Edit View's Definition	37
Add Foreign Keys to Physical Model	40
Chapter 6 - Logical Model	41
About Logical Model	41
Add Entities to Logical Model	41
Add Relations to Logical Model	43
Chapter 7 - Conceptual Model	45
About Conceptual Model	45
Add Entities to Conceptual Model	45
Add Relations to Conceptual Model	46
Chapter 8 - Diagram Layout	48
Work with Diagram Canvas	48

Add Labels	49
Add Notes	49
Add Images	50
Add Shapes	51
Add Layers	52
Chapter 9 - Connection	54
Manage Connections	54
Database Connections (Available only in Non-Essentials Edition)	54
Connect to Database Servers	54
General Settings	55
Advanced Settings	56
Databases / Attached Databases Settings	57
SSL Settings	58
SSH Settings	59
HTTP Settings	60
Compatibility Settings	61
ODBC Connections (Available only in Non-Essentials Edition)	62
Chapter 10 - Reverse Engineering (Available only in Non-Essentials Version)	64
Import from Database	64
Chapter 11 - Forward Engineering (Available only in Non-Essentials Version)	65
Forward Engineer Physical Model	65
Synchronize to Database	65
Export SQL	69
Chapter 12 - Other Advanced Tools	71
Useful Features	71
Model Conversion	71
Auto Layout (Available only in Non-Essentials Version)	71
Print & Export Model	72
Virtual Grouping (Available only in Non-Essentials Edition)	72
Search Filter	73
Dark Theme	74
Full Screen Mode	74
Chapter 13 - Configurations	76
Options Settings	76
General	76
Code Completion (Available only in Non-Essentials Edition)	76
Model	77
Editor	77
Auto Recovery	78
File Locations	78
Connectivity	79
Environment	79

Advanced	80
Chapter 14 - Hints and Tips	81
Model Hints and Tips	81
Chapter 15 - Hot Keys	83
Model Hot Keys	83
Chapter 16 - Trace Logs	84
Log Files	84

Chapter 1 - Introduction

About Navicat Data Modeler

Navicat Data Modeler is a powerful and easy-to-use GUI tool for creating and manipulating database models. It enables users to design database structures, reverse engineer, forward engineer, generate SQL files and print models to files, etc.

Navicat Data Modeler is available on three platforms - Microsoft Windows, macOS and Linux. Here are some highlights of Navicat Data Modeler:

- Create and manipulate conceptual/logical/physical models.
- Support various database systems: MySQL, MariaDB, Oracle, PostgreSQL, SQLite and SQL Server (including cloud databases like Amazon RDS, Amazon Redshift, Alibaba Cloud, Microsoft Azure).
- Reverse engineer databases/schemas or tables/views to a model.
- Forward engineer a physical model to a SQL file or a database/schema.
- Create and edit table structures directly.
- Support Navicat Cloud and Navicat On-Prem Server.

For details, visit our website: <https://www.navicat.com>

System Requirements

Windows

- Microsoft Windows 7, Windows 8, Windows 8.1, Windows 10, Windows 11, Server 2012, Server 2016, Server 2019, Server 2022

macOS

- macOS 10.14 Mojave, macOS 10.15 Catalina, macOS 11 Big Sur, macOS 12 Monterey, macOS 13 Ventura

Linux

- Debian 9, Debian 10, Debian 11, Ubuntu 18.04, Ubuntu 20.04, Ubuntu 22.04, Fedora 33, Fedora 34, Fedora 35, Linux Mint 19, Linux Mint 20, Linux Mint 21, Deepin 20

Supported Databases

- MySQL - 3.23, 4.0, 4.1, 5.0, 5.1, 5.5, 5.6, 5.7, 8.0
- MariaDB - 5.1, 5.2, 5.3, 5.5, 10.0, 10.1, 10.2, 10.3, 10.4, 10.5, 10.6, 10.7, 10.8, 10.9
- SQL Server - 2000, 2005, 2008, 2008 R2, 2012, 2014, 2016, 2017, 2019, 2022 and SQL Azure

- Oracle - 8i Release 1, 8i Release 2, 8i Release 3, 9i Release 1, 9i Release 2, 10g Release 1, 10g Release 2, 11g Release 1, 11g Release 2, 12c Release 1, 12c Release 2, 18c, 19c
- PostgreSQL - 7.3, 7.4, 8.0, 8.1, 8.2, 8.3, 8.4, 9.0, 9.1, 9.2, 9.3, 9.4, 9.5, 9.6, 10.0, 11.0, 12.0, 13.0, 14.0, 15.0
- SQLite 3

Installation

We strongly suggest that you shut down any opened applications. This will help ensure a smooth installation.

Installation for Download Version

1. Download Navicat Data Modeler Windows version.
2. Open the **.exe** file.
3. Click **Next** at the Welcome Screen.
4. Read the License Agreement. Accept it and click **Next**.
5. Accept the location of the program icons by clicking **Next**. If you wish to change the destination of the folder for Navicat Data Modeler program click **Browse**.
6. Follow the remaining steps.

Installation for CD Version

1. Load the Navicat Data Modeler CD Installation disk into the CD-ROM drive.
2. Open the **.exe** file.
3. Click **Next** at the Welcome Screen.
4. Read the License Agreement. Accept it and click **Next**.
5. Accept the location of the program icons by clicking **Next**. If you wish to change the destination of the folder for Navicat Data Modeler program click **Browse**.
6. Follow the remaining steps.

Registration

When the trial period is finished, Navicat Data Modeler requires a license key or a subscription plan to continue using the features.

Note: Perpetual License and Subscription Plan cannot be used at the same Navicat Data Modeler. Before changing the registration method, you need to deactivate the license key or sign out your Navicat ID.

Perpetual License

If you have purchased a perpetual license, you will receive a license key for activating Navicat Data Modeler.

In the **Perpetual License** section, paste your license key (16 digits) and click the **Activate** button. Navicat Data Modeler contacts our licensing server to activate the license key. If the activation process is successful, the license key details are displayed.

Manual Activation

Manual activation is available when your computer does not have an internet connection. You will need another computer with an internet connection to complete this activation process.

1. If the online activation is failed, click **Manual Activation**.
2. Copy the Request Code in the **Copy the Request Code Here:** box.
3. Open web browser on a computer with an internet connection and then go to https://customer.navicat.com/manual_activate.php.
4. Paste/Enter the Request Code into the left box.
5. Click **Get Activation Code**.
6. Copy the generated Activation Code in the right box.
7. Go back to the computer where you are activating Navicat Data Modeler.
8. Paste the Activation Code into the **Paste the Activation Code Here:** box.
9. Click **Activate**.

Subscription Plan

If you have subscribed a plan, you can sign in your Navicat ID to use Navicat Data Modeler during the subscription term.

Note: Navicat ID is the Email address that you used to subscribe the plan.

In the **Subscription** section, provide your **Navicat ID** and **Password**. After signed in, the subscription plan details are displayed.

Navicat Data Modeler contacts our licensing server once per hour to auto reload the plan by default. If you have updated your plan in the portal site, you can use the **Reload Plan** button to force reloading the new plan.

Note: Each Navicat ID can connect to only one Navicat Data Modeler. If you sign in your Navicat ID in another Navicat Data Modeler, you will be signed out from the current Navicat Data Modeler.

Migration / Upgrade

Migrate Navicat Data Modeler to a new computer

1. In Navicat Data Modeler, choose **Help -> Registration**.
2. [Perpetual License] Click **Deactivate** to online deactivate the license key.
3. [Subscription Plan] Click **Sign Out** to sign out your Navicat ID.
4. Uninstall Navicat Data Modeler from the existing computer.
5. Re-install Navicat Data Modeler in the new computer.

Upgrade Navicat Data Modeler

If you want to upgrade an installed copy of Navicat Data Modeler to the latest release, please choose **Help -> Check For Updates** to start the Updater. It will automatically check your installed version. If there is a new version, simply follow the steps in the Updater to upgrade your Navicat Data Modeler. It will replace your previous Navicat Data Modeler and your current settings will remain unchanged.

Or, you can submit your registered email address on the [Customer Center](#) to download the latest version installer.

End-User License Agreement

Note: For the License Agreement of Navicat Cloud service, please click [here](#).

IMPORTANT: THIS SOFTWARE END USER LICENSE AGREEMENT ("EULA") IS A LEGAL AGREEMENT BETWEEN YOU (EITHER AN INDIVIDUAL OR, IF PURCHASED OR OTHERWISE ACQUIRED BY OR FOR AN ENTITY, AN ENTITY) AND PREMIUMSOFT CYBERTECH LTD..READ IT CAREFULLY BEFORE COMPLETING THE INSTALLATION PROCESS AND USING THE SOFTWARE. IT PROVIDES A LICENSE TO USE THE SOFTWARE AND CONTAINS WARRANTY INFORMATION AND LIABILITY DISCLAIMERS. BY INSTALLING AND USING THE SOFTWARE, YOU ARE CONFIRMING YOUR ACCEPTANCE OF THE SOFTWARE AND AGREEING TO BECOME BOUND BY THE TERMS OF THIS AGREEMENT. IF YOU DO NOT AGREE TO BE BOUND BY THESE TERMS, THEN DO NOT INSTALL THE SOFTWARE AND RETURN THE SOFTWARE TO YOUR PLACE OF PURCHASE. THIS EULA SHALL APPLY ONLY TO THE SOFTWARE SUPPLIED BY PREMIUMSOFT CYBERTECH LTD. HEREWITH REGARDLESS OF WHETHER OTHER SOFTWARE IS REFERRED TO OR DESCRIBED HEREIN.

1. Definitions

- a. "Non-commercial Version" means a version of the Software, so identified, for use by i) the individual who is a natural person and not a corporation, company, partnership or association or other entity or organization (ii) the individual who is a student, faculty or staff member at an educational institution, and (iii) staff of a non-profit organization or charity organization only. For purposes of this definition, "educational institution" means a public or private school, college, university and other post secondary

educational establishment. A non-profit organization is an organization whose primary objective is to support an issue or matter of private interest or public concern for non-commercial purposes.

- b. "Not For Resale (NFR) Version" means a version, so identified, of the Software to be used to review and evaluate the Software, only.
- c. "PremiumSoft" means PREMIUMSOFT CYBERTECH LTD. and its licensors, if any.
- d. "Software" means only the PremiumSoft software program(s) and third party software programs, in each case, supplied by PremiumSoft herewith, and corresponding documentation, associated media, printed materials, and online or electronic documentation.
- e. "Unregistered version", "Trial version" or "Demo version" means an unregistered copy of the SOFTWARE ("UNREGISTERED SOFTWARE") which may be used by the USER for evaluation purposes for a period of fourteen (14) days following the initial installation of the UNREGISTERED SOFTWARE. At the end of the trial period ("TRIAL PERIOD"), the USER must either register the SOFTWARE or remove it from his system. The UNREGISTERED SOFTWARE may be freely copied and distributed to other users for their evaluation.
- f. "Navicat Essentials" means a version of the Software, so identified, to be used for commercial purpose.

2. License Grants

The licenses granted in this Section 2 are subject to the terms and conditions set forth in this EULA:

- a. Subject to Section 2(b), you may install and use the Software on a single computer; OR install and store the Software on a storage device, such as a network server, used only to install the Software on your other computers over an internal network, provided you have a license for each separate computer on which the Software is installed and run. Except as otherwise provided in Section 2(b), a license for the Software may not be shared, installed or used concurrently on different computers.
- b. In addition to the single copy of the Software permitted in Section 2(a), the primary user of the computer on which the Software is installed may make a second copy of the Software and install it on either a portable computer or a computer located at his or her home for his or her exclusive use, provided that:
 - A. the second copy of the Software on the portable or home computer (i) is not used at the same time as the copy of the Software on the primary computer and (ii) is used by the primary user solely as allowed for such version or edition (such as for educational use only),
 - B. the second copy of the Software is not installed or used after the time such user is no longer the primary user of the primary computer on which the Software is installed.
- c. In the event the Software is distributed along with other PremiumSoft software products as part of a suite of products (collectively, the "Studio"), the license of the Studio is licensed as a single product

and none of the products in the Studio, including the Software, may be separated for installation or use on more than one computer.

- d. You may make one copy of the Software in machine-readable form solely for backup purposes. You must reproduce on any such copy all copyright notices and any other proprietary legends on the original copy of the Software. You may not sell or transfer any copy of the Software made for backup purposes.
- e. You agree that PremiumSoft may audit your use of the Software for compliance with these terms at any time, upon reasonable notice. In the event that such audit reveals any use of the Software by you other than in full compliance with the terms of this Agreement, you shall reimburse PremiumSoft for all reasonable expenses related to such audit in addition to any other liabilities you may incur as a result of such non-compliance.
- f. Your license rights under this EULA are non-exclusive.

3. License Restrictions

- a. Other than as set forth in Section 2, you may not make or distribute copies of the Software, or electronically transfer the Software from one computer to another or over a network.
- b. You may not alter, merge, modify, adapt or translate the Software, or decompile, reverse engineer, disassemble, or otherwise reduce the Software to a human-perceivable form.
- c. Unless otherwise provided herein, you may not rent, lease, or sublicense the Software.
- d. Other than with respect to a Trial / Demo Version, Non-commercial Lite Version or a Not For Resale Version of the Software, you may permanently transfer all of your rights under this EULA only as part of a sale or transfer, provided you retain no copies, you transfer all of the Software (including all component parts, the media and printed materials, any upgrades, this EULA, the serial numbers, and, if applicable, all other software products provided together with the Software), and the recipient agrees to the terms of this EULA. If the Software is an upgrade, any transfer must include all prior versions of the Software from which you are upgrading. If the copy of the Software is licensed as part of the whole Studio (as defined above), the Software shall be transferred only with and as part of the sale or transfer of the whole Studio, and not separately. You may retain no copies of the Software. You may not sell or transfer any Trial / Demo Version, Non-commercial Lite Version or Not For Resale Version of the Software.
- e. Unless otherwise provided herein, you may not modify the Software or create derivative works based upon the Software.
- f. Non-commercial Versions of the Software may not be used for, or distributed to any party for, any commercial purpose.
- g. Unless otherwise provided herein, you shall not

- A. in the aggregate, install or use more than one copy of the Trial / Demo Version and Non-commercial Lite Version of the Software,
 - B. download the Trial / Demo Version and Non-commercial Lite Version of the Software under more than one username,
 - C. alter the contents of a hard drive or computer system to enable the use of the Trial / Demo Version of the Software for an aggregate period in excess of the trial period for one license to such Trial / Demo Version,
 - D. disclose the results of software performance benchmarks obtained using the Trial / Demo Version or Non-commercial Lite Version to any third party without PremiumSoft prior written consent, or
 - E. use the Trial / Demo Version of the Software for a purpose other than the sole purpose of determining whether to purchase a license to a commercial or education version of the software; provided, however, notwithstanding the foregoing, you are strictly prohibited from installing or using the Trial / Demo Version or Non-commercial Lite Version of the Software for any commercial training purpose.
- h. You may only use the Not for Resale Version of the Software to review and evaluate the Software.
 - i. You may receive the Software in more than one medium but you shall only install or use one medium. Regardless of the number of media you receive, you may use only the medium that is appropriate for the server or computer on which the Software is to be installed.
 - j. You may receive the Software in more than one platform but you shall only install or use one platform.
 - k. You shall not use the Software to develop any application having the same primary function as the Software.
 - l. In the event that you fail to comply with this EULA, PremiumSoft may terminate the license and you must destroy all copies of the Software (with all other rights of both parties and all other provisions of this EULA surviving any such termination).
 - m. This program may include Oracle Instant Client (OCI). You agree that you shall
 - 1. not use of the Oracle Instant Client to the business operations;
 - 2. not assign, give, or transfer the Oracle Instant Client or an interest in them to another individual or entity;
 - a. make the Programs available in any manner to any third party for use in the third party's business operations; and
 - b. title to the Programs from passing to the end user or any other party;

3. not reverse engineer, disassemble or decompile the Oracle Instant Client and duplicate the Programs except for a sufficient number of copies of each Program for your licensed use and one copy of each Program media;
4. discontinue use and destroy or return to all copies of the Oracle Instant Client and documentation after termination of the Agreement;
5. not publish any results of benchmark tests run on the Programs;
6. comply fully with all relevant export laws and regulations of the United States and other applicable export and import laws to assure that neither the Oracle Instant Client, nor any direct product thereof, are exported, directly or indirectly, in violation of applicable laws;
7. allow PremiumSoft to audit your use of the Oracle Instant Client;

4. Upgrades

If this copy of the Software is an upgrade from an earlier version of the Software, it is provided to you on a license exchange basis. You agree by your installation and use of such copy of the Software to voluntarily terminate your earlier EULA and that you will not continue to use the earlier version of the Software or transfer it to another person or entity unless such transfer is pursuant to Section 3.

5. Ownership

The foregoing license gives you limited license to use the Software. PremiumSoft and its suppliers retain all rights, title and interest, including all copyright and intellectual property rights, in and to, the Software (as an independent work and as an underlying work serving as a basis for any application you may develop), and all copies thereof. All rights not specifically granted in this EULA, including Federal and International Copyrights, are reserved by PremiumSoft and its suppliers.

6. LIMITED WARRANTY AND DISCLAIMER

- a. Except with respect to Trial / Demo Version, Non-commercial Lite Version and Not For Resale Version of the Software, PremiumSoft warrants that, for a period of thirty (30) days from the date of delivery (as evidenced by a copy of your receipt): the physical media on which the Software is furnished will be free from defects in materials and workmanship under normal use. The Software is provided "as is". PremiumSoft makes no warranties, express or implied, arising from course of dealing or usage of trade, or statutory, as to any matter whatsoever.
- b. PremiumSoft provides no remedies or warranties, whether express or implied, for Trial / Demo version, Non-commercial Lite version and the Not for Resale version of the Software. Trial / Demo version, Non-commercial Lite version and the Not for Resale version of the Software are provided "as is".
- c. Except as set Forth in the foregoing limited warranty with respect to software other than Trial/ Demo version, Non-commercial Lite version and Not for Resale version, PremiumSoft and its suppliers disclaim all other warranties and representations, whether express, implied, or otherwise, including the

warranties of merchantability or fitness for a particular purpose. Also, there is no warranty of non-infringement and title or quiet enjoyment. PremiumSoft does not warrant that the Software is error-free or will operate without interruption. The Software is not designed, intended or licensed for use in hazardous environments requiring fail-safe controls, including without limitation, the design, construction, maintenance or operation of nuclear facilities, aircraft navigation or communication systems, air traffic control, and life support or weapons systems. PremiumSoft specifically disclaims any express or implied warranty of fitness for such purposes.

- d. If applicable law requires any warranties with respect to the Software, all such warranties are limited in duration to thirty (30) days from the date of delivery.
- e. No oral or written information or advice given by PremiumSoft, its dealers, distributors, agents or employees shall create a warranty or in any way increase the scope of ANY warranty PROVIDED HEREIN.

7. LIMITATION OF LIABILITY

(a) Neither PremiumSoft nor its suppliers shall be liable to you or any third party for any indirect, special, incidental, punitive or consequential damages (including, but not limited to, damages for the inability to use equipment or access data, loss of business, loss of profits, business interruption or the like), arising out of the use of, or inability to use, the Software and based on any theory of liability including breach of contract, breach of warranty,

tort (including negligence), product liability or otherwise, even if PremiumSoft or its representatives have been advised of the possibility of such damages.

8. Third Party Software

The Software may contain third party software which requires notices and/or additional terms and conditions. By accepting this EULA, you are also accepting the additional terms and conditions of the third party software.

9. General

No PremiumSoft dealer, agent or employee is authorized to make any amendment to this EULA.

This EULA contains the complete agreement between the parties with respect to the subject matter hereof, and supersedes all prior or contemporaneous agreements or understandings, whether oral or written. You agree that any varying or additional terms contained in any purchase order or other written notification or document issued by you in relation to the Software licensed hereunder shall be of no effect. The failure or delay of PremiumSoft to exercise any of its rights under this EULA or upon any breach of this EULA shall not be deemed a waiver of those rights or of the breach.

If any provision of this EULA shall be held by a court of competent jurisdiction to be contrary to law, that provision will be enforced to the maximum extent permissible, and the remaining provisions of this EULA will remain in full force and effect.

10. Basis of Bargain

The Limited Warranty and Disclaimer and Limited Liability set forth above are fundamental elements of the basis of the agreement between PremiumSoft and you. PremiumSoft would not be able to provide the Software on an economic basis without such limitations. Such Limited Warranty and Disclaimer and Limited Liability inure to the benefit of PremiumSoft's licensors.

11. Term

By downloading and/or installing this SOFTWARE, the Licensor agrees to the terms of this EULA.

This license is effective until terminated. Licensor has the right to terminate your License immediately if you fail to comply with any term of this License.

"as is". Licensor makes no warranties, express or implied, arising from course of dealing or usage of trade, or statutory, as to any matter whatsoever. In particular, any and all warranties or merchantability, fitness for a particular purpose or non-infringement of third party rights are expressly excluded.

12. Governing Law

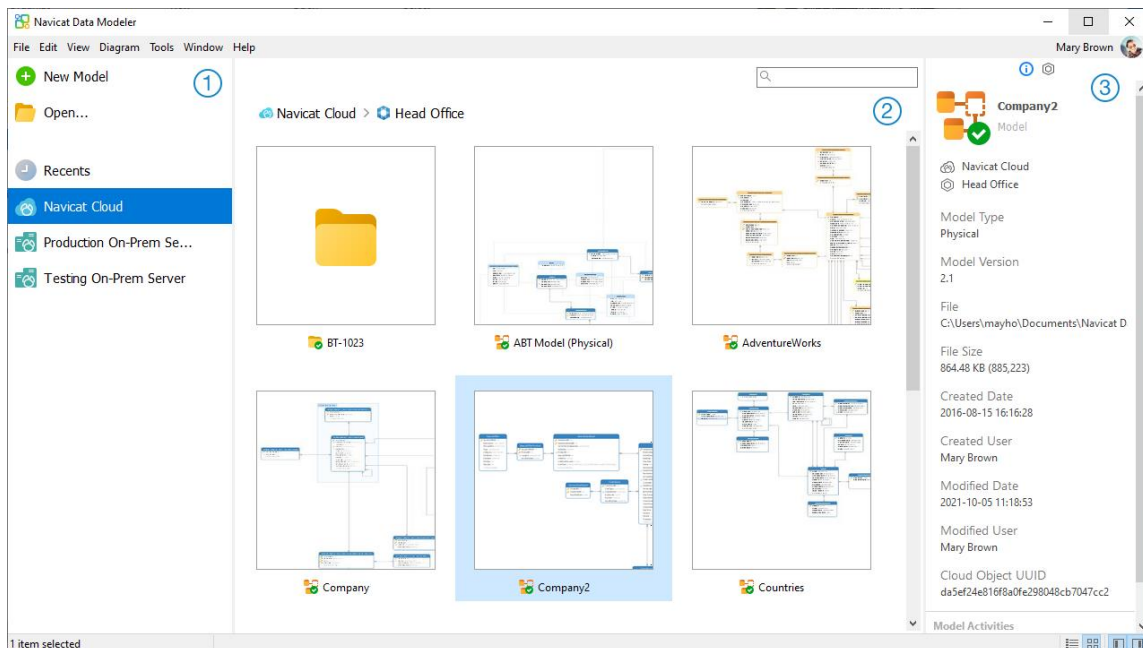
This License will be governed by the laws in force in Hong Kong. You hereby consent to the non-exclusive jurisdiction and venue sitting in Hong Kong to resolve any disputes arising under this EULA.

Should you have any questions concerning the validity of this License, please contact: licensing@navicat.com. If you desire to contact the Licensor for any other reason, please contact support@navicat.com.

PremiumSoft and other trademarks contained in the Software are trademarks or registered trademarks of PremiumSoft CyberTech Ltd. in the United States and/or other countries. Third party trademarks, trade names, product names and logos may be the trademarks or registered trademarks of their respective owners. You may not remove or alter any trademark, trade names, product names, logo, copyright or other proprietary notices, legends, symbols or labels in the Software. This EULA does not authorize you to use PremiumSoft or its licensors names or any of their respective trademarks.

Chapter 2 - User Interface

Main Window



① Navigation Pane

The Navigation pane allows you to create new models, open local model files, recently opened model files, or model files in Navicat Cloud / On-Prem Server. If the Navigation pane is hidden, choose **View -> Show Navigation Pane** from the menu bar.

② Content Pane

The Content pane contains the models that are in the selected section of the Navigation pane. Use the **Detail** or **Icon** buttons to change the view.

③ Information Pane

The **General** tab shows the general information of the model or the selected item.

The **Project** tab shows the project members and the project activities done by the members. Click **+** to add members to the project.

If the Information pane is hidden, choose **View -> Show Information Pane** from the menu bar.

Chapter 3 - Collaboration

About Collaboration

Navicat Data Modeler allows you to synchronize connections, models and virtual groups from Navicat Data Modeler, other Navicat family members, different machines and different platforms. You can use Navicat Cloud to host the files. Or, if you have installed our another product, Navicat On-Prem Server, in your environment, you can hosts everything in-house.

Our collaboration feature allows you to give your teammates access to your projects when they log into their accounts. That way, you and your teammates can work on the same project without revealing your username and password. You can even choose to restrict the type of access your teammates have to your project.

Manage Cloud

Navicat Cloud

Navicat Cloud is a cloud service provided by PremiumSoft for synchronizing connections, queries, snippets, models, workspaces and virtual groups.

Navicat Cloud could not connect and access your databases. By which it means, it could only store your connection settings, queries, snippets, models, workspaces, and virtual groups; your database passwords and data (e.g. tables, views, etc) will not be stored to Navicat Cloud.

Note: You can only sign in to one Navicat Cloud account in the software. PremiumSoft will keep all synchronized files strictly confidential, and all employees are prohibited from viewing/accessing content of files you may store in your Navicat Cloud account.

Create Navicat Cloud Account

1. In the menu bar, choose **File** -> **Manage Cloud**.
2. In the Manage Cloud window, select **Navicat Cloud**.
3. Click **Create Navicat ID**.
4. Enter the required information and click **Sign Up**. A verification email will send to your email address.
5. Click the link in the email to verify the new account.

Hint: You can sign in with the same Navicat ID you use for the Navicat Customer Center.

Sign In Navicat Cloud

1. In the menu bar, choose **File** -> **Manage Cloud**.
2. In the Manage Cloud window, select **Navicat Cloud**.

3. Enter your **Navicat ID** and **Password**.
4. Click **Sign In**.
5. If you enabled two-step verification in [Navicat Cloud Portal](#), a code will be sent to your phone via your mobile app. Enter the received code to sign in.

Sign Out Navicat Cloud

1. Close all models in Navicat Cloud.
2. At the top right, click your avatar.
3. In the Manage Cloud window, select **Navicat Cloud**.
4. Click **Sign Out**.

View Usage

1. At the top right, click your avatar.
2. In the Manage Cloud window, select **Navicat Cloud**.
3. Your usage and current plan will be shown.

Change Your Picture

1. At the top right, click your avatar.
2. In the Manage Cloud window, select **Navicat Cloud**.
3. Click your avatar.
4. Choose an image file.

Manage Your Account

You can change your password, enable Two-Step Verification, upgrade Cloud Plan, etc in [Navicat Cloud Portal](#).

1. At the top right, click your avatar.
2. In the Manage Cloud window, select **Navicat Cloud**.
3. Click **Manage Account**.
4. A web browser will automatically open up to Navicat Cloud Portal.

On-Prem Server

Navicat On-Prem Server is an on-premise solution that provides you with the option to host a cloud environment for storing Navicat objects (connection settings, queries, snippets, models, workspaces, and virtual groups) internally at your location.

Before you can add an On-Prem Server, you must first set up Navicat On-Prem Server in your environment.

Note: You can add multiple On-Prem Server in the software.

Add New On-Prem Server

1. In the menu bar, choose **File -> Manage Cloud**.
2. In the Manage Cloud window, click **+ New On-Prem Server -> New On-Prem Server**.
3. Enter your On-Prem Server login information.

Option	Description
Host	The host name or IP address of your On-Prem Server.
Port	The port number of your On-Prem Server.
Verify Server Certificate	Enable this option to verify the server certificates.
Enable Push Synchronization	Navicat Data Modeler receives a silent push notification whenever its files stored in your On-Prem Server changes.

4. Click **OK**.

Add New On-Prem Server with URI

1. In the menu bar, choose **File -> Manage Cloud**.
2. In the Manage Cloud window, click **+ New On-Prem Server -> New On-Prem Server with URI**.
3. Paste your On-Prem Server URI.
4. Click **OK**.

Note: The URI can be copied from your On-Prem Server portal site.

Sign In On-Prem Server

1. In the menu bar, choose **File -> Manage Cloud**.
2. In the Manage Cloud window, select the On-Prem Server.
3. Enter your **Username** and **Password**.
4. Click **Sign In**.

5. If you enabled two-step verification, a code will be sent to you via the verification method you have selected.
Enter the received code to sign in.

Sign Out On-Prem Server

1. Close all models in your On-Prem Server.
2. At the top right, click your avatar.
3. In the Manage Cloud window, select the On-Prem Server.
4. Click **Sign Out**.

Edit On-Prem Server

1. Close all models in your On-Prem Server.
2. At the top right, click your avatar.
3. In the Manage Cloud window, select the On-Prem Server.
4. Click **Sign Out**.
5. Right-click your server and select **Edit On-Prem Server**.
6. Edit the On-Prem Server information.
7. Sign in your server.

Edit On-Prem Server

1. Close all models in your On-Prem Server.
2. At the top right, click your avatar.
3. In the Manage Cloud window, select the On-Prem Server.
4. Click **Sign Out**.
5. Right-click your server and select **Edit On-Prem Server**.
6. Edit the On-Prem Server information.
7. Sign in your server.

Remove On-Prem Server

1. Close all models in your On-Prem Server.
2. At the top right, click your avatar.

3. In the Manage Cloud window, select the On-Prem Server.
4. Click **Sign Out**.
5. Right-click your server and select **Remove On-Prem Server**.
6. Click **Delete**.

View Usage

1. At the top right, click your avatar.
2. In the Manage Cloud window, select the On-Prem Server.
3. Your usage will be shown.

Change Your Picture

1. At the top right, click your avatar.
2. In the Manage Cloud window, select the On-Prem Server.
3. Click your avatar.
4. Choose an image file.

Manage Your Account

You can change your password, enable Two-Step Verification, etc in your On-Prem Server web portal.

1. At the top right, click your avatar.
2. In the Manage Cloud window, select the On-Prem Server.
3. Click **Manage Account**.
4. A web browser will automatically open up to your On-Prem Server web portal.

Push Synchronization

Push Synchronization enables Navicat Data Modeler to receive a silent push notification whenever the files stored in Navicat Cloud or On-Prem Server changes.

Enable Push Synchronization

1. At the top right, click your avatar.
2. In the Manage Cloud window, right-click Navicat Cloud or your On-Prem Server.
3. Turn on **Enable Push Synchronization**.

Disable Push Synchronization

1. At the top right, click your avatar.
2. In the Manage Cloud window, right-click Navicat Cloud or your On-Prem Server.
3. Turn off **Enable Push Synchronization**.

Cache and Local Copies

When you logged into Navicat Cloud or your On-Prem Server, Navicat Data Modeler saves the cloud object files and some information in the local computer. The cache and local copies use to make sure your changes are saved in the cloud.

Clear Cache and Local Copies

1. At the top right, click your avatar.
2. In the Manage Cloud window, select Navicat Cloud or your On-Prem Server.
3. Click **Sign Out**.
4. Right-click Navicat Cloud or your On-Prem Server and select **Clear Cache and Local Copies**.
5. Click **Clear**.

Open Containing Folder

1. In the main window, select Navicat Cloud or your On-Prem Server.
2. Open your project.
3. Right-click anywhere in the project and select **Open Containing Folder**.

Projects

Work With Projects

A project is a way to structure and organize Navicat objects. You can put related objects in one project, and then share the project with other accounts for collaboration if necessary.

Create New Projects

1. In the main window, select **Navicat Cloud** or your On-Prem Server.
2. Click **+ New Project**.
3. Enter the name of the new project.
4. Click **OK**.

Manage Existing Projects

To rename a project

1. In the main window, right-click the project and select **Rename**.
2. Enter a new project name.

Note: Only the project owner and the members with the *Can Manage & Edit* right can rename the project.

To delete a project

1. In the main window, right-click the project and select **Delete Project**.
2. Click **Delete**.

Note: Only the project owner can delete the project.

Note: Before you delete the project, you must remove all objects in the project.

To quit a project

1. In the main window, right-click the project and select **Quit Project**.
2. Click **Quit**.

Manage Members

Add Members

1. In the main window, right-click the project and select **Manage Members**.
2. Click **Add Members**.
3. [Navicat Cloud] Enter the member's Navicat ID and press ENTER.
4. [On-Prem Server] Check the boxes of the users that you want to add.
5. Select the member right.
6. Click **Add**.

Member Rights	Privileges
Can Manage & Edit	Read Objects, Write Objects, Manage Members and Rename Projects
Can Edit	Read Objects and Write Objects
Can View	Read Objects

Manage Existing Members

To edit the right of a member

1. In the main window, right-click the project and select **Manage Members**.
2. Use the drop-down list next to the member to change the right.
3. Click **Apply**.

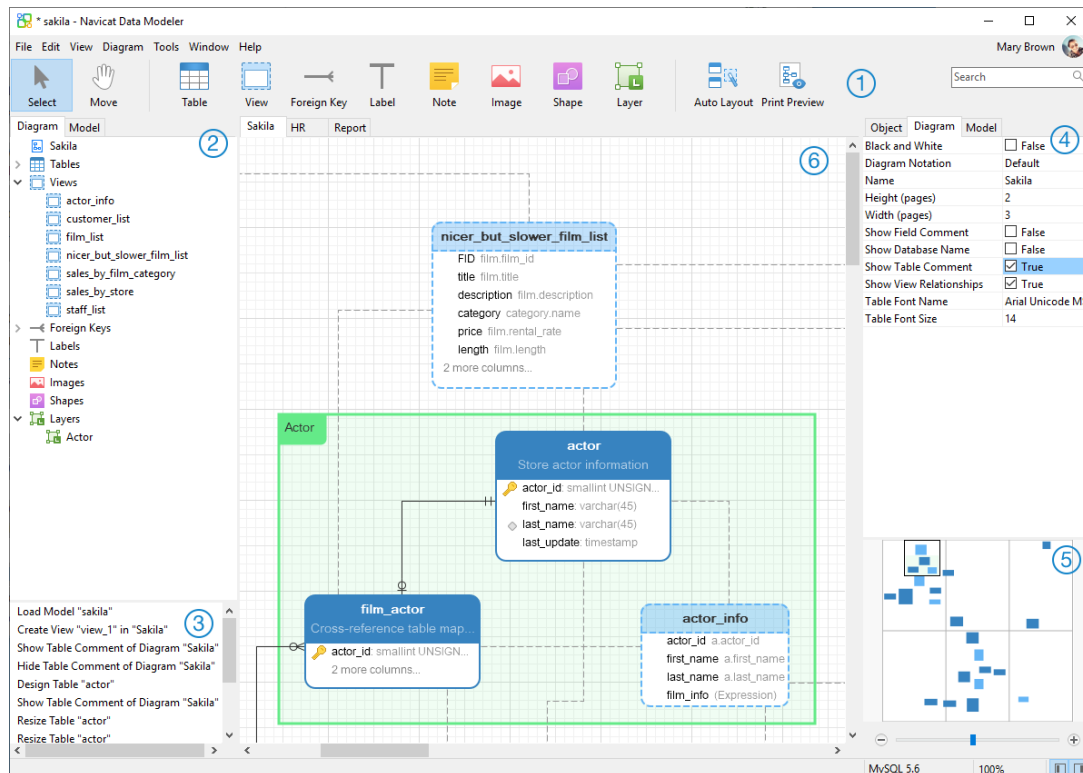
To remove a member from a project

1. In the main window, right-click the project and select **Manage Members**.
2. Click the **X** icon next to the member.
3. Click **Apply**.

Chapter 4 - Model

About Model

The model window consists of a toolbar, several panes and a diagram canvas for you to design your model. A model file can have more than one diagram. Each diagram is represented by a tab in the model. To create a new diagram, choose **Diagram -> New Diagram** from the menu bar.



1 Toolbar

The Toolbar is located near the top of the Main Window. The buttons display in the toolbar depend on the model type (physical, logical and conceptual). You can use the toolbar to perform some basic tasks, such as adding tables, entities or views, applying Auto Layout feature, etc.

2 Explorer Pane

The Explorer pane has two tabs: **Model** and **Diagram**. The Model tab holds all schemas, tables, views or entities in the model, including those used in each individual diagram. You can simply drag an object from the Model tab and drop to the active diagram canvas. The Diagram tab holds all the objects (tables, views, layers, notes, images, relations, etc) added to the active diagram. If the Explorer pane is hidden, choose **View -> Show Explorer** from the menu bar.

3 History Pane

The History pane shows all the actions that you have taken. Simply click an action to restore that state. If the History pane is hidden, choose **View -> Show Explorer** and **Show History** from the menu bar.

4 Properties Pane

The Properties pane includes the **Model**, **Diagram** and **Object** tabs for setting default properties for your model. You can edit the properties settings of the model, the active diagram and the selected objects quickly. If the Properties pane is hidden, choose **View -> Show Properties** from the menu bar.

Option	Description
Begin Arrow Style	The style of the arrow's back.
Black and White	Check this box to change the diagram color to black and white.
Bold	Check this box or press CTRL+B to bold the table, view, entity, foreign key, relation or shape.
Border Color	The color of the shape's border.
Cap Style	The cap style of the line/arrow.
Case Sensitivity	The case sensitivity of the table or view names. Available only for MySQL and MariaDB physical models.
Color	The color of the object.
Dash Style	The dash style of the line/arrow.
Database Name	The database name of the table/view.
Database Type	The database type of the model.
Database Version	The database version of the model.
Default Database	The default database of the model.
Default Schema	The default schema of the model.
Diagram Notation	The notation of the diagram. The notation options are depended on the model type.
End Arrow Style	The style of the arrow's front.
Entity Font Name	The font name of the entities.
Entity Font Size	The font size of the entities.
Font Bold	Check this box to bold the note/label font.
Font Color	The font color of the note, label or layer.
Font Italic	Check this box to apply an italic style to the note or label font.
Font Name	The font name of the note, label or layer.
Font Size	The font size of the note, label or layer.
Height	The height of the object.
Height (pages)	The height of the diagram (number of papers).
Join Style	The join style of the line/arrow.
Left	The number of pixels from the object to the left side of the canvas.
Model Type	The type of the model.
Model Version	The version of Navicat Data Modeler that used to create the model.
Name	The name of the object.
Opacity	The transparency of the image/shape. The value for this can be between 0 and 100. Use 100 for opacity and 0 for transparent.
Referenced Cardinality	The foreign key/relation cardinality of the referenced (parent) table or entity.
Referencing Cardinality	The foreign key/relation cardinality of the referencing (child) table or entity.
Schema Name	The schema name of the table/view.

Show Database Names	Check this box to show the database names of the tables/views in the diagram.
Show Entity Comments	Check this box to show the entity comments in the diagram.
Show Field Comments	Check this box to show the field comments in the diagram.
Show name	Check this box to show the name of the foreign key, relation or shape.
Show Schema Names	Check this box to show the schema names of the tables/views in the diagram.
Show Table Comments	Check this box to show the table comments in the diagram.
Show View Relationships	Check this box to show the relationship line of the view.
Table Font Name	The font name of the tables.
Table Font Size	The font size of the tables.
Top	The number of pixels from the object to the top of the canvas.
Visible	Check this box to show the foreign key/relation lines.
Width	The width of the object.
Width (pages)	The width of the diagram (number of papers).

⑤ Overview Pane

The Overview pane displays the whole active diagram in the canvas. To zoom in or zoom out the selected area of the diagram, adjust the slider. Same effect can be achieved with keyboard shortcuts:

Zoom In: [CTRL++] or [CTRL+Mousewheel Up]

Zoom out: [CTRL+-] or [CTRL+Mousewheel Down]

If the Overview pane is hidden, choose **View -> Show Properties** and **Show Overview** from the menu bar.


⑥ Diagram Canvas

You can design your diagram on the Diagram Canvas. All added objects can be moved (by dragging them with mouse or by keyboard), resized, aligned to the grid, etc.

Create Model

Local Model File

The essential steps to create a model are:


1. In the main window, click  **New Model**.
2. Choose the model type.
3. Design your model.
4. Choose **File -> Save**.
5. Enter the file name and choose the save path.

6. Click **Save**.

Cloud Model File

If you have logged into Navicat Cloud / On-Prem Server, you can store the model in a project.

The essential steps to create a model are:

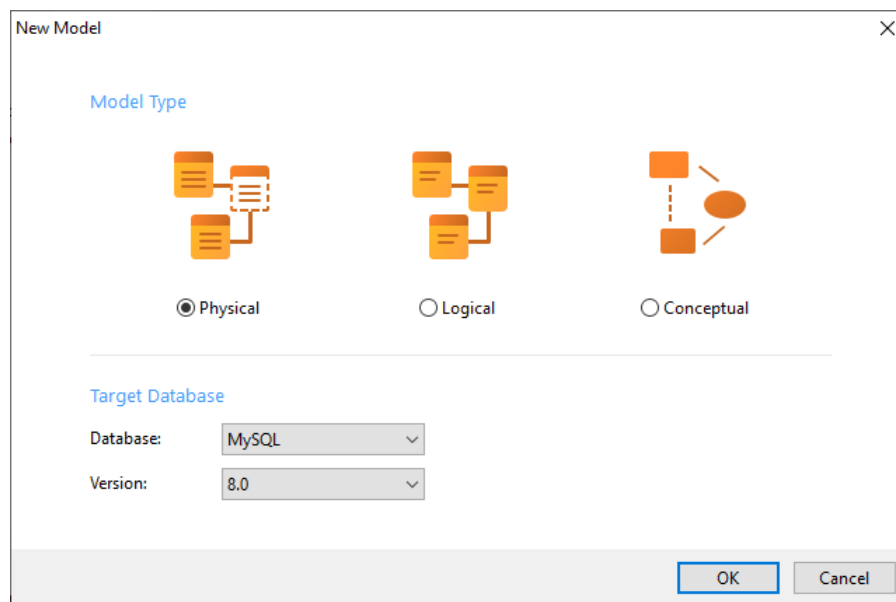
1. In the main window, click  **New Model**.
2. Choose the model type.
3. Design your model.
4. Choose **File -> Save to Cloud**.
5. Enter the model name and choose the project.
6. Click **Save**.

Chapter 5 - Physical Model

About Physical Model

Navicat Data Modeler allows you to create physical models, including tables, fields, views, foreign key constraints and other physical properties of the database/schema.

In the **New Model** window, choose **Physical** as **Model Type** and select the target **Database** and **Version**.



You can also use the following features to create a physical model:

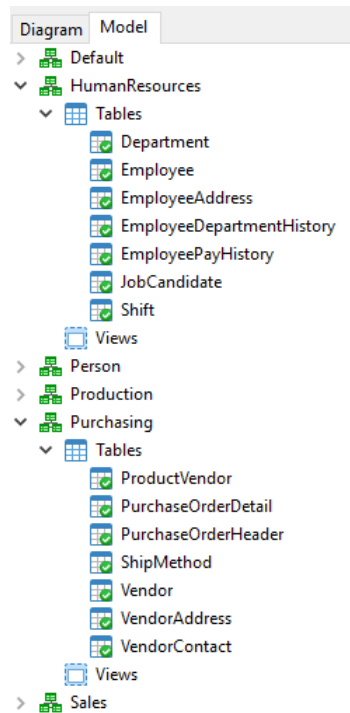
- [Import from Database](#) - reverse engineer from existing databases/schemas or ODBC data source.
- [Model Conversion](#) - convert from a logical/conceptual model.

After creating a physical model, you can [compare and synchronize](#) it to an existing database/schema or [export](#) it to a SQL file.

Add Databases / Schemas to Physical Model

When creating a new model, a database/schema (named Default) is automatically created and it is the default database/schema. All newly added objects (tables and views) are belonged to the default database/schema.


You can view all databases/schemas with their objects as tree structure on the Explorer's Model tab.





The pop-up menu options of a database/schema in the Explorer's Model tab include:

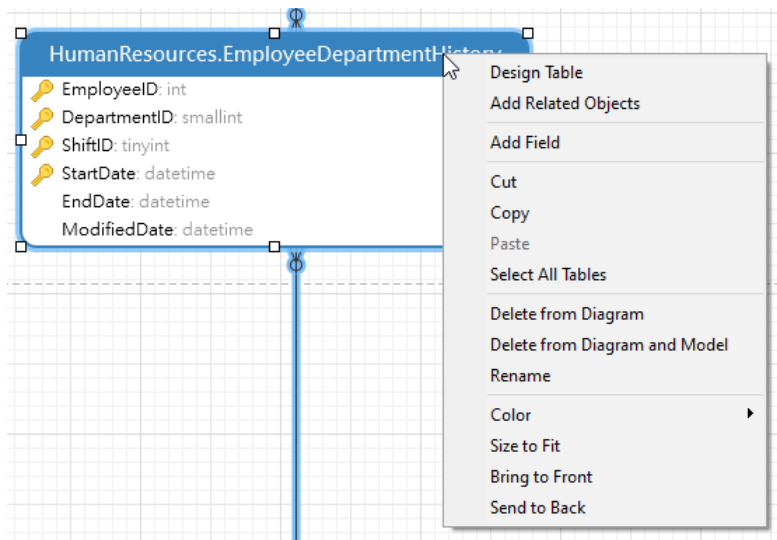
Option	Description
New Database / New Schema	Create a database/schema.
Delete Database / Delete Schema	Delete the selected database/schema including its objects from the model. The default database/schema cannot be deleted.
Rename	Change the name of the database/schema.
Set As Default Database / Set As Default Schema	Set the selected database/schema as the default database/schema.

Add Tables to Physical Model

To add a new table, click the  **Table** button from the toolbar and click anywhere on the canvas. To add an existing table from the Explorer's Model tab, simply drag and drop the selected table from the Model tab to the canvas.

For Default diagram notation, the  icon means the field is a primary key. The  icon indicates that the field serves as an index.

Note: If you right-click a field, you can choose to add, insert, delete, rename the field and set the field as primary key.



The pop-up menu options of the table object in the canvas include:

Option	Description
Design Table	Edit the table structure in a Table Designer , e.g. fields, indexes, foreign keys, etc.
Add Related Objects	Add all related tables/views to the selected table.
Add Field	Add fields to the existing table.
Cut	Remove the table from the diagram and put it on the clipboard.
Copy	Copy the table from the diagram to the clipboard.
Paste	Paste the content from the clipboard into the diagram.
Select All Tables	Select all tables in the diagram.
Delete from Diagram / Delete from Diagram and Model	Delete a table from the diagram or from both diagram and model.
Rename	Change the name of the table.
Color	Change the color of the table.
Size to Fit	Resize the table automatically to fit its contents.
Bring to Front	Bring the table to the foreground.
Send to Back	Move the table to the background.

Table Designer

Table Designer is the basic Navicat Data Modeler tool for working with tables. It allows you to create, edit and drop table's fields, indexes, foreign keys, and much more.

Note: The tabs and options in the designer depend on the diagram database type and version you are chosen.

In the **Fields** tab, you can search a field name by pressing CTRL+F.

* Vendor @Purchasing - Table

+ Add Field ← Insert Field - Delete Field 🔑 Primary Key ↑ Move Up ↓ Move Down

Fields	Indexes	Foreign Keys	Uniques	Checks	Triggers	Options	Storage	Comment
Name	Type	Size	Scale	Not null	Key			Comment
VendorID	int			<input checked="" type="checkbox"/>		1		Primary key for Vendor records.
AccountNumber	(USER-DEFINED)			<input checked="" type="checkbox"/>				Vendor account (identification) num
Name	(USER-DEFINED)			<input checked="" type="checkbox"/>				Company name.
CreditRating	tinyint			<input checked="" type="checkbox"/>				1 = Superior, 2 = Excellent, 3 = Above
PreferredVendorStatus	(USER-DEFINED)			<input checked="" type="checkbox"/>				0 = Do not use if another vendor is a
ActiveFlag	(USER-DEFINED)			<input checked="" type="checkbox"/>				0 = Vendor no longer used. 1 = Venc
PurchasingWebServiceURL	nvarchar	1024		<input type="checkbox"/>				Vendor URL.
ModifiedDate	datetime			<input checked="" type="checkbox"/>				Date and time the record was last up

Default: ☐ With Values
 User Defined Type:

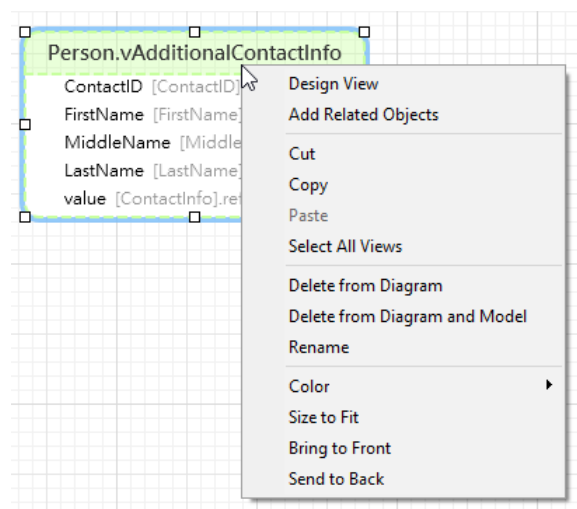
OK Cancel

Add Views

Add Views to Physical Model

To add a new view, click the **View** button from the toolbar and click anywhere on the canvas. To add an existing view from the Explorer's Model tab, simply drag and drop the selected view from the Model tab to the canvas.

Note: If you right-click the view connector, you can choose to add or delete vertices and change its color, or go to the source view or the target table.



The pop-up menu options of the view object in the canvas include:

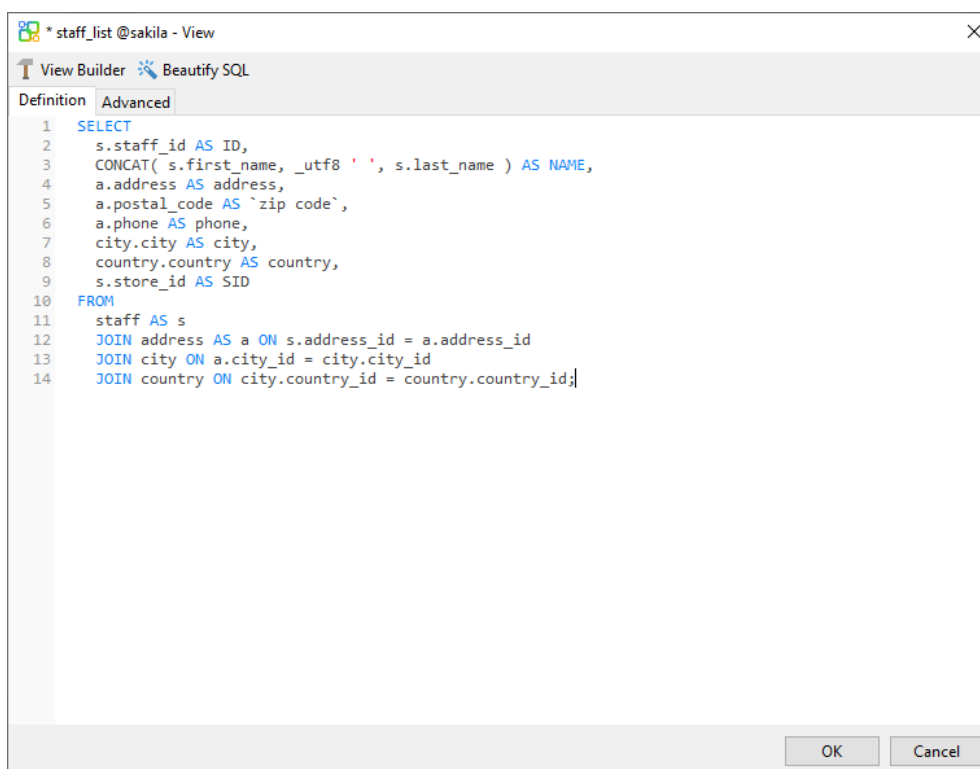
Option	Description
Design View	Edit the view structure in a View Designer .

Add Related Objects	Add all related tables/views to the selected view.
Cut	Remove the view from the diagram and put it on the clipboard.
Copy	Copy the view from the diagram to the clipboard.
Paste	Paste the content from the clipboard into the diagram.
Select All Views	Select all views in the diagram.
Delete from Diagram / Delete from Diagram and Model	Delete a view from the diagram or from both diagram and model.
Rename	Change the name of the view.
Color	Change the color of the view.
Size to Fit	Resize the view automatically to fit its contents.
Bring to Front	Bring the view to the foreground.
Send to Back	Move the view to the background.

View Designer

View Designer is the basic Navicat Data Modeler tool for working with views. In View Designer, you can build the views visually using [View Builder](#) or edit the view's [Definition](#) directly.

Note: The tabs and options in the designer depend on the diagram database type and version you are chosen.

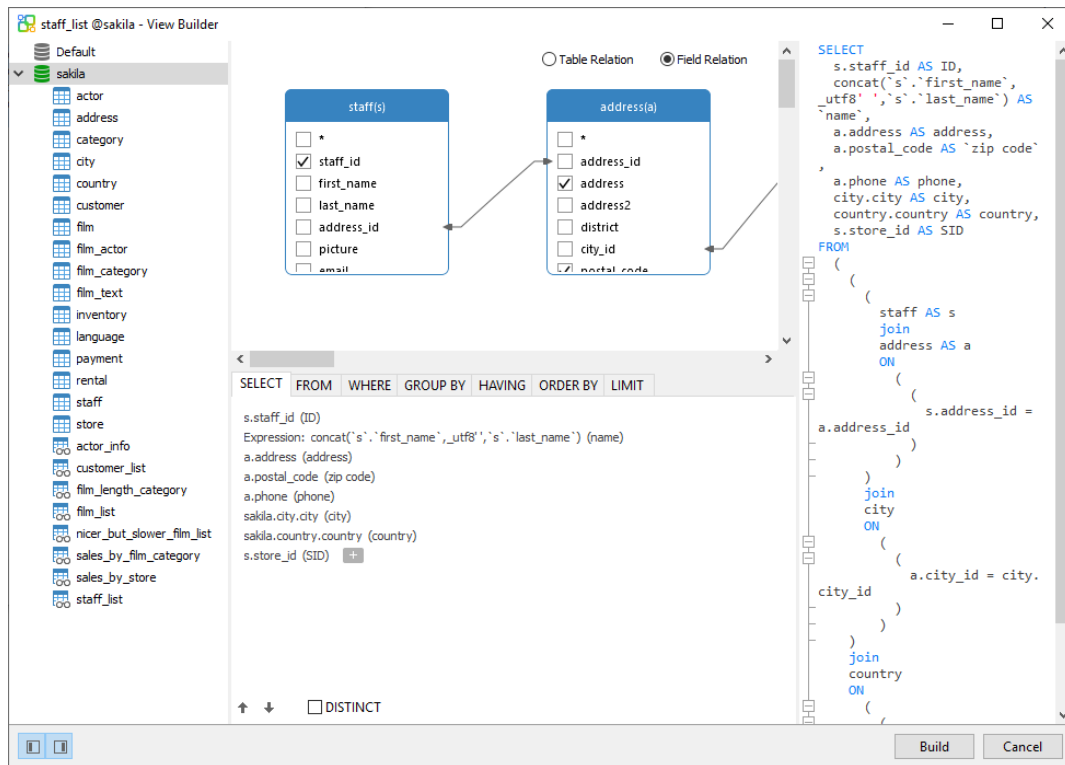


Work with View Builder (Available only in Non-Essentials Version)

Navicat Data Modeler provides a useful tool called **View Builder** for building views visually. It allows you to create and edit views without knowledge of SQL. Even if you are familiar with SQL, the convenient and fluent graphical interface makes it easier to create relations and visualize the view.

In View Designer, click the  **View Builder** button to open the visual View Builder.

All database objects are displayed on the left **Object** pane. Whereas on the middle pane, it is divided into two portions: the upper **Diagram** pane, and the lower **Criteria** pane. When building the view, you can view the auto-generated SQL on the right **SQL** pane.



Add Objects to View

The first step is to decide which tables and views you need to add to the view.

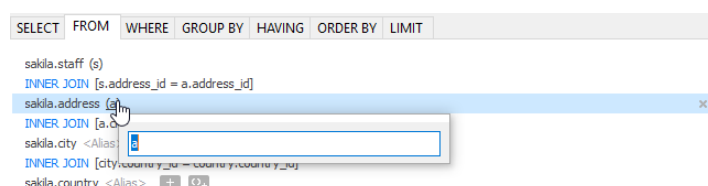
To add tables and views to the view, use one of the following methods:

- Drag them from the Object pane to the Diagram pane.
- Double-click them on the Object pane.

You can set aliases for tables, views and subqueries by double-clicking the object title on the Diagram pane and entering the name to use as an alias for the object name.

After you have added objects to the diagram, you can use the **FROM** tab to adjust the view to your needs.

- To change the object, click the object and select an identifier.
- To add the table alias, click **<Alias>**.




You can right-click an object on the Diagram pane and select **Remove**, or simply press DELETE key to remove the selected object from the view.

When you remove an object, View Builder automatically removes joins that involve that object.

Choose Output Fields

To include fields in the view, use one of the following methods:

- Check the left checkbox of a field name you want to add to the view on the Diagram pane.
- To include all the fields for an object, check the * checkbox on the Diagram pane.
- To add all fields for all objects, click  on the **SELECT** tab and select **All fields(*)**.

The selected fields display on the **SELECT** tab. You can specify additional output field options.

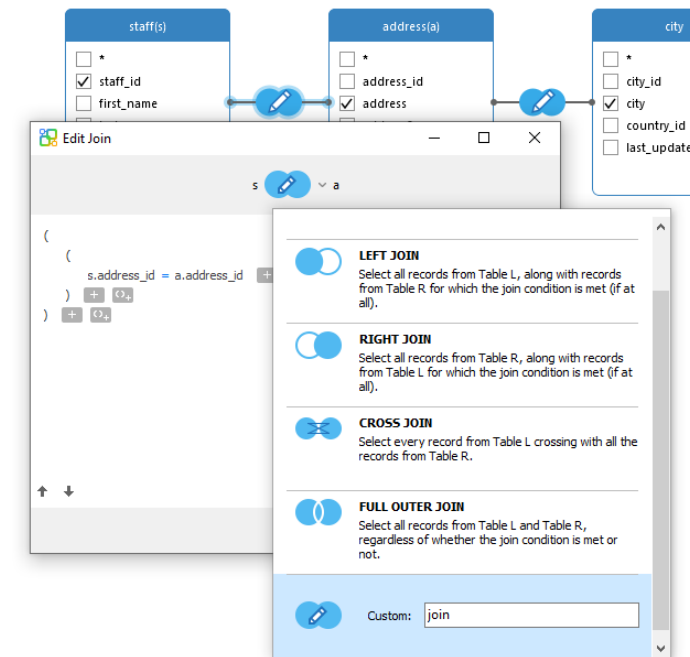
- Check the **DISTINCT** checkbox to force the view to return distinct results.
- To add the field alias, click **<Alias>** and enter the name.
- Click the identifier and select the **Aggregate** function.
- Use the up arrow and down arrow buttons to change the order of fields.

Set Field Association

View Builder will automatically join the tables as per the foreign key relations. If you want to associate database objects manually, just select a field from an object and drag it to a field in another object. A connector line appears between the two objects to visually represent the relationship and the join type.

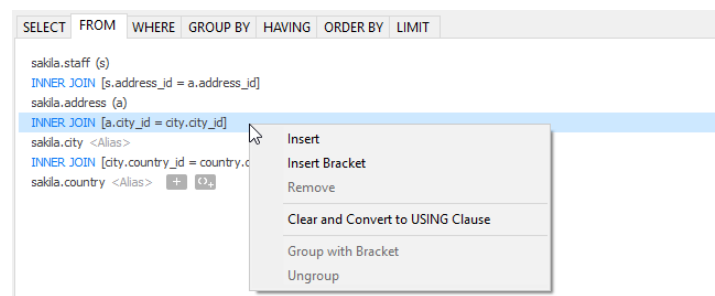
There are two views to show the connector lines: Table Relation and Field Relation. The **Field Relation** view allows you to identify matching fields in two tables, while the **Table Relation** view displays the join relationship between the two tables.

All joins are initially created as INNER JOIN by default. To change the association, click or double-click the connector line on the Diagram pane or click the JOIN keyword on the **FROM** tab, and then select a join type. If a join type is not listed, you can enter a customized one in the **Custom** textbox.



To remove a join, right-click the connector line and select **Remove**.

To modify the join condition, right-click a connector line and select **Edit Join**, or click the condition on the **FROM** tab.




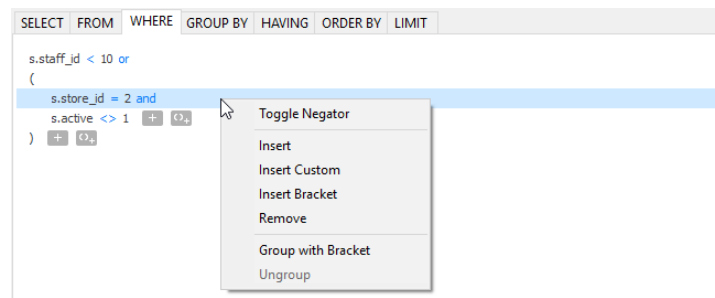
The pop-up menu options of the FROM tab:

Option	Description
Insert	Add an identifier, an expression or a subquery.
Insert Bracket	Add a pair of parentheses.
Remove	Remove the identifier, expression or subquery.
Clear and Convert to USING Clause	Remove the ON condition and convert it to USING clause.
Clear and Convert to ON Clause	Remove the USING condition and convert it to ON clause.
Group with Bracket	Add parentheses to group the selected conditions.
Ungroup	Remove the parentheses.

Set Filter Criteria

When retrieving data, you may want to set up a filtering expression. To filter data returned by the view, right-click a field on the Diagram pane and select **Add Field To -> WHERE** and an operator.

The condition is added to the **WHERE** tab. You can edit the value there by clicking **<Value>**. If you want to add a condition with parentheses, click . You can change a logical operator (and/or) by clicking it. Use the up arrow and down arrow buttons to change the order of conditions.



The pop-up menu options of the WHERE tab:

Option	Description
Toggle Negator	Reverse the meaning of the condition.
Insert	Add a condition.
Insert Custom	Add a custom condition.
Insert Bracket	Add a pair of parentheses.
Remove	Remove the condition.
Group with Bracket	Add parentheses to group the selected conditions.
Ungroup	Remove the parentheses.

Group Resulting Data

You can set the conditions for grouping records by right-clicking a field in the Diagram pane and selecting **Add Field To -> GROUP BY**.

The condition is added to the **GROUP BY** tab. Use the up arrow and down arrow buttons to change the order of fields.

On the **HAVING** tab, you can filter summarized data or grouped data. Select the identifiers, operators, aggregate or enter expressions to include in the condition. Use the up arrow and down arrow buttons to change the order of conditions.

The pop-up menu options of the HAVING tab:

Option	Description
Toggle Negator	Reverse the meaning of the condition.
Insert	Add a condition.
Insert Custom	Add a custom condition.
Insert Bracket	Add a pair of parentheses.
Remove	Remove the condition.
Group with Bracket	Add parentheses to group the selected conditions.
Ungroup	Remove the parentheses.

Sort Resulting Data

You can set the way of sorting records by right-clicking a field on the Diagram pane and selecting **Add Field To -> ORDER BY -> ASC** or **DESC**. The condition will be added to the ORDER BY tab.

Limit Resulting Data

On the **LIMIT** tab, you can limit your view results to those that fall within a specified range.

Offset


Specify the number of records to be skipped. It is optional.

Limit

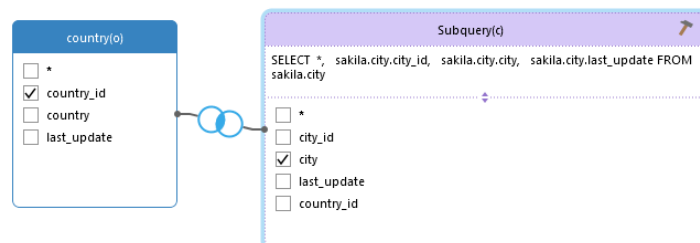
Specify the number of records to be displayed.


Note: Available only for MySQL, PostgreSQL, SQLite and MariaDB.

Add Expressions/Subqueries

You can add an expression or a subquery to further limit the view results. On the **FROM** tab, click  and select the **Expression/Subquery** tab.

After entered an expression or a subquery, confirm editing by pressing the ENTER key. It will be added to the Diagram pane indicates that the statement contains an expression or a subquery and identifies the columns it is on.



By clicking the  button, you will be switched to a subquery layer where you can build it visually in the same way as the main query.

You can always go back to the main query by clicking **(Main Query)**.

View Generated SQL

The **SQL** pane presents a read-only, formatted representation of the SQL generated by View Builder. You can copy the SQL that appears in the SQL pane for use in other tools. In a subquery layer, you can enable **Show Current Layer Only** to show the subquery SQL.

Zoom In/Zoom Out

Navicat Data Modeler has the ability to zoom in or zoom out the diagram. Right-click anywhere on the Diagram pane and select **Zoom -> Zoom In/Zoom Out/100%**. The same effect can be achieved with keyboard shortcuts.

Zoom In: [CTRL+=]

Zoom Out: [CTRL+-]


Reset: [CTRL+0]

Edit View's Definition

In **Definition** tab, you can create and edit the SELECT statement SQL for a view. Navicat Data Modeler provides a wide range advanced features for editing the view definition, such as compelling code editing capabilities, smart code-completion, sql formatting, and more.

Hint: SELECT statement will be automatically generated while you build in View Builder.

Beautify SQL (Available only in Non-Essentials Version)

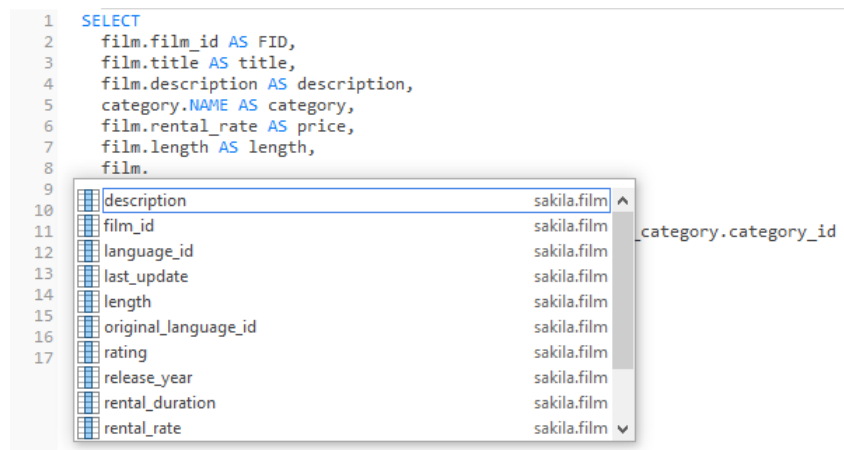
To format messy SQL code into a well-structured script, you can click the  **Beautify SQL** button.

Code Completion (Available only in Non-Essentials Version)

Code completion feature in Navicat Data Modeler pops up a list of suggestions as you type your SQL statement in the editor. It assists you with statement completion and the available properties of database objects, for example databases, tables, fields, views etc with their appropriate icons and information.

To invoke code completion, just simply press '.' for the available properties of database object currently in the scope.

When the suggestion list appears, press TAB to insert the first item. You can also select the needed item using UPPER ARROW or DOWN ARROW and then press TAB or ENTER.



In addition, code completion can be invoked by typing a character or pressing ESC on your keyboard for SQL keywords/database objects.

Hint: Resize the suggestion list by dragging the lower right corner.





You can enable or disable the code completion feature in [Options](#).

Clipboard Stack

When you copy or cut some codes as usual in the editor, the copied content will also be added to Clipboard Stack. Clipboard Stack can store up to 10 items and use the last-in-first-out logic. To paste an item from Clipboard Stack, you can press CTRL+SHIFT+V. Press CTRL+SHIFT+V multiple times to cycle through Clipboard Stack.

Code Folding

Code folding feature enables you to collapse blocks of code such that only the first line of the block appears in SQL Editor.

A block of code that can be folded is indicated by an icon  to the left of the first line of the block. A vertical line extends from the icon to the bottom of the foldable code. In contrast, a folded block of code is indicated by an icon  to left of the code block. You can fold the block by clicking  or expand it by clicking .

```
1  SELECT
2  `film`.`film_id` AS `FID`,
3  `film`.`title` AS `title`,
4  `film`.`description` AS `description`,
5  group_concat( ...)
7  FROM
8  (((
9      `category`
10     LEFT JOIN `film_category` ON (( ...)
13     LEFT JOIN `film` ON (( ...)
16     JOIN `film_actor` ON ((
17         `film`.`film_id` = `film_actor`.`film_id`
18     )))
19     JOIN `actor` ON ((
20         `film_actor`.`actor_id` = `actor`.`actor_id`
21     )))
22  GROUP BY
23  `film`.`film_id`,
24  `category`.`name`
```

Brace Highlight

Navicat Data Modeler supports to highlight the matching brace in the editor, i.e. () .

Note: The cursor must be on a brace to show the highlight.

```
7  FROM
8  (((
9      `category`
10     LEFT JOIN `film_category` ON (( ...)
13     LEFT JOIN `film` ON (( ...)
16     JOIN `film_actor` ON ((
17         `film`.`film_id` = `film_actor`.`film_id`
18     )))
19     JOIN `actor` ON ((
20         `film_actor`.`actor_id` = `actor`.`actor_id`
21     )))
22  GROUP BY
```

Find and Replace

Find

The Find bar is provided for quick searching for the text in the editor. Just simply choose **Edit -> Find** from the menu or press CTRL+F, and then enter a search string.

```

1  SELECT
2    `film`.`film_id` AS `FID`,
3    `film`.`title` AS `title`,
4    `film`.`description` AS `description`,
5    group_concat( concat( `actor`.`first_name`, _utf8mb3 ' ', `actor`.`last_name` )
6    SEPARATOR ', ' ) AS `actors`
7  FROM
8    (((
9      `category`
10     LEFT JOIN `film_category` ON ((
11       `category`.`category_id` = `film_category`.`category_id`
12     )))
13    LEFT JOIN `film` ON ((
14      `film_category`.`film_id` = `film`.`film_id`
15    )))
16    JOIN `film_actor` ON ((
17      `film`.`film_id` = `film_actor`.`film_id`
18    )))
19    JOIN `actor` ON ((
20      `film_actor`.`actor_id` = `actor`.`actor_id`
21    )))
22  GROUP BY
23    `film`.`film_id`,
24    `category`.`name`

```

× Find: film_id Next Highlight All ☐ Replace

The search starts at the cursor's current position to the end of the file.

To find the next occurrence, just simply click **Next** or press F3.

Replace

To open the Replace bar, simply check the **Replace** box. Then, enter the text you want to search and replace.

Click the **Replace** button to replace the first occurrence.

Click the **Replace All** button to replace all occurrences automatically.

× Find: film_id Next Highlight All ☒ Replace

ID Replace Replace All

There are some additional options for Find and Replace, click :

Option	Description
Highlight All	Highlight all matches in the editor.
Incremental Search	Find matched text for the search string as each character is typed.
Match Case	Enable case sensitive search.
Regular Expression	Search regular expressions.
Whole Word	Return the objects that match the entire word of the search string.

Zoom In/Zoom Out


Navicat Data Modeler has the ability to zoom in or zoom out the SQL in the editor.

Zoom In: [CTRL++] or [CTRL+Mousewheel Up]

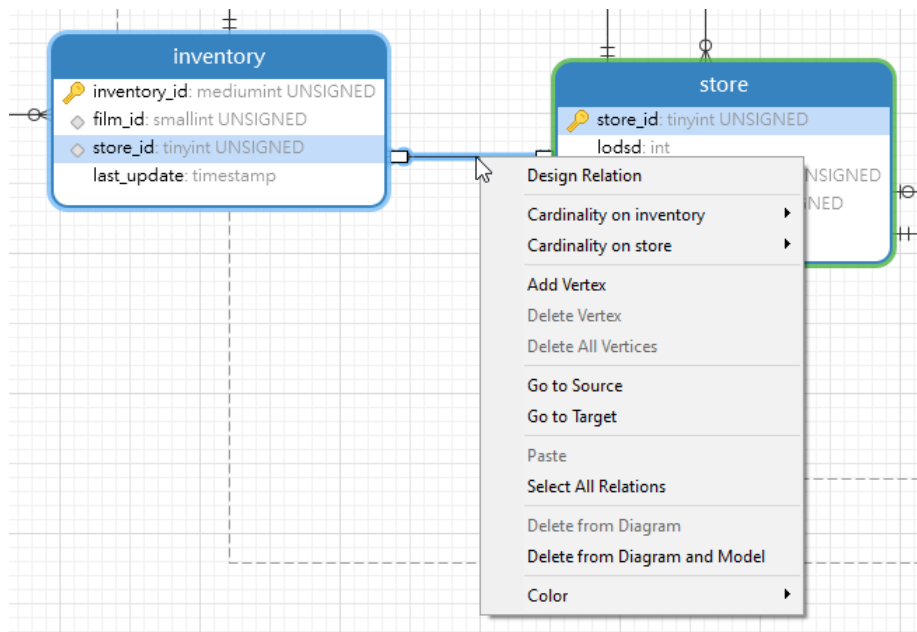
Zoom out: [CTRL+-] or [CTRL+Mousewheel Down]

Reset: [CTRL+0]

Add Foreign Keys to Physical Model

To add a foreign key, click the  **Foreign Key** button from the toolbar and drag and drop a field from the child table to the parent table. To show/hide the linked name label, simply check/uncheck the **Show name** option in the Properties pane.

When you move your mouse over a foreign key connector, the border of the parent and the child tables turn to green and blue respectively. Also, the referenced fields and the referencing fields are highlighted.



The pop-up menu options of the foreign key in the canvas include:

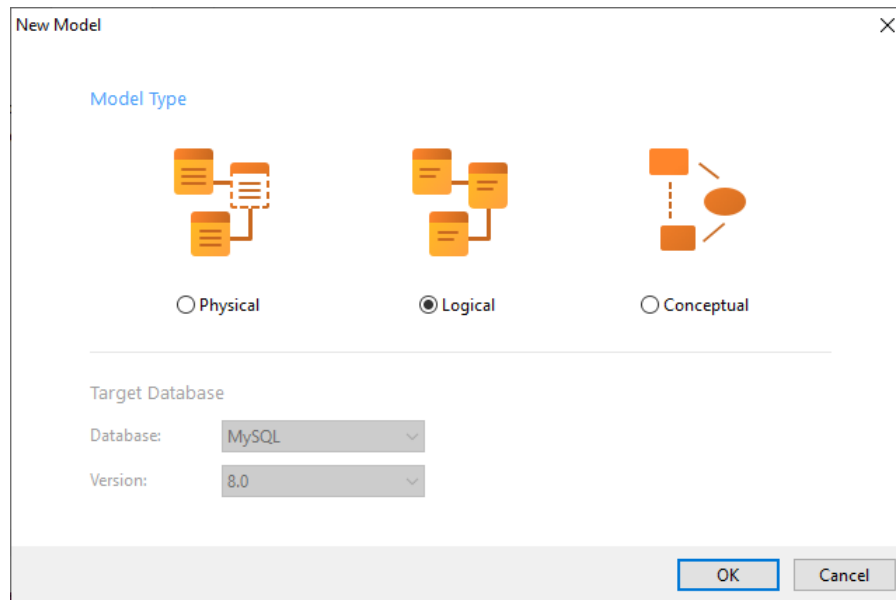
Option	Description
Design Relation	Edit the foreign key in a Table Designer .
Cardinality on table_name1	Set the cardinality on table_name1: None, One and Only One, Many, One or Many, Zero or One, Zero or Many.
Cardinality on table_name2	Set the cardinality on table_name2: None, One and Only One, Many, One or Many, Zero or One, Zero or Many.
Add Vertex	Add a vertex on a foreign key connector.
Delete Vertex	Delete a vertex on a foreign key connector.
Delete All Vertices	Delete all vertices on a foreign key connector.
Go to Source	Go to and select the source (child) table.
Go to Target	Go to and select the target (parent) table.
Paste	Paste the content from the clipboard into the diagram.
Select All Relations	Select all foreign keys in the diagram.
Delete from Diagram and Model	Delete a foreign key from both diagram and model.
Color	Change the color of the foreign key.

Chapter 6 - Logical Model

About Logical Model

Navicat Data Modeler allows you to create logical models, including entities, attributes and relations.


In the **New Model** window, choose **Logical** as **Model Type**.





You can also use the following features to create a logical model:

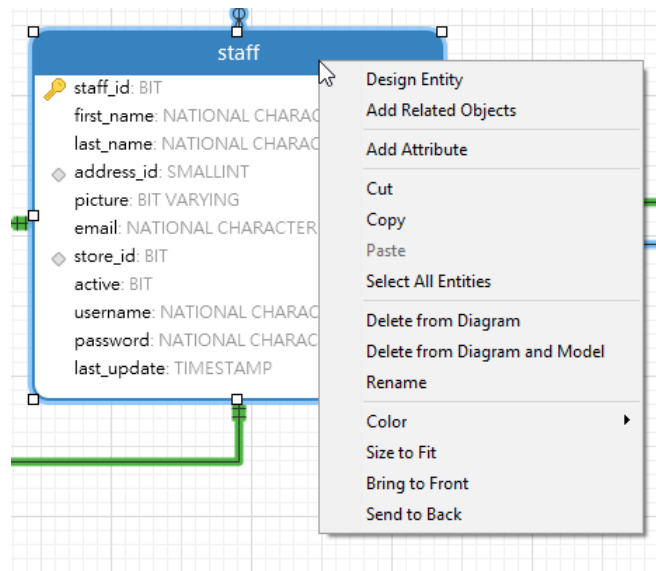
- [Import from Database](#) - reverse engineer from existing databases/schemas or ODBC data source.
- [Model Conversion](#) - convert from a physical/conceptual model.

Add Entities to Logical Model

To add a new entity, click the  **Entity** button from the toolbar and click anywhere on the canvas. To add an existing entity from the Explorer's Model tab, simply drag and drop the selected entity from the Model tab to the canvas.

For Default diagram notation, the  icon means the attribute is a primary key. The  icon indicates that the attribute serves as an index.

Note: If you right-click an attribute, you can choose to add, insert, delete, rename the attribute and set the attribute as primary key.



The pop-up menu options of the entity object in the canvas include:

Option	Description
Design Entity	Edit the entity structure in an Entity Designer , e.g. attributes and relations.
Add Related Objects	Add all related entities to the selected entity.
Add Attribute	Add attributes to the existing entity.
Cut	Remove the entity from the diagram and put it on the clipboard.
Copy	Copy the entity from the diagram to the clipboard.
Paste	Paste the content from the clipboard into the diagram.
Select All Entities	Select all entities in the diagram.
Delete from Diagram / Delete from Diagram and Model	Delete an entity from the diagram or from both diagram and model.
Rename	Change the name of the entity.
Color	Change the color of the entity.
Size to Fit	Resize the entity automatically to fit its contents.
Bring to Front	Bring the entity to the foreground.
Send to Back	Move the entity to the background.

Entity Designer

Entity Designer is the basic Navicat Data Modeler tool for working with entities. It allows you to create, edit and drop entity's attributes, relations, etc.

In the **Attributes** tab, you can search an attribute name by pressing CTRL+F.

payment - Entity

+ Add Attribute ← Insert Attribute - Delete Attribute 🔑 Primary Key ↑ Move Up ↓ Move Down

Attributes Indexes Relations Uniques Comment

Name	Type	Length	Decimals	Not null		Comment
payment_id	SMALLINT	5	0	<input checked="" type="checkbox"/>	1	
customer_id	SMALLINT	5	0	<input checked="" type="checkbox"/>		
staff_id	BIT	3	0	<input checked="" type="checkbox"/>		
rental_id	INTEGER	11	0	<input type="checkbox"/>		
amount	DECIMAL	5	2	<input checked="" type="checkbox"/>		
payment_date	TIMESTAMP	0	0	<input checked="" type="checkbox"/>		
last_update	TIMESTAMP	0	0	<input checked="" type="checkbox"/>		

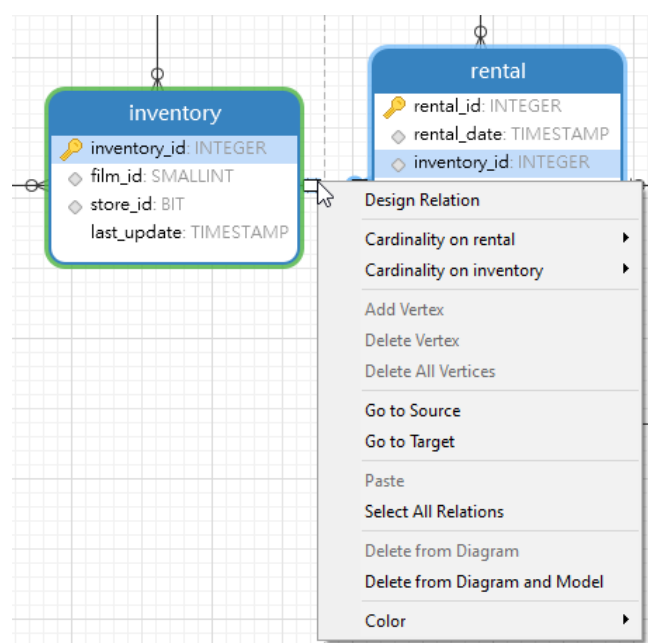
Default:

OK Cancel

Add Relations to Logical Model

To add a relation, click the **Relation** button from the toolbar and drag and drop an attribute from the child entity to the parent entity. To show/hide the linked name label, simply check/uncheck the **Show name** option in the Properties pane.

When you move your mouse over a relation connector, the border of the parent and the child entities turn to green and blue respectively. Also, the referenced attributes and the referencing attributes are highlighted.



The pop-up menu options of the relation in the canvas include:

Option	Description
Design Relation	Edit the relation in an Entity Designer .

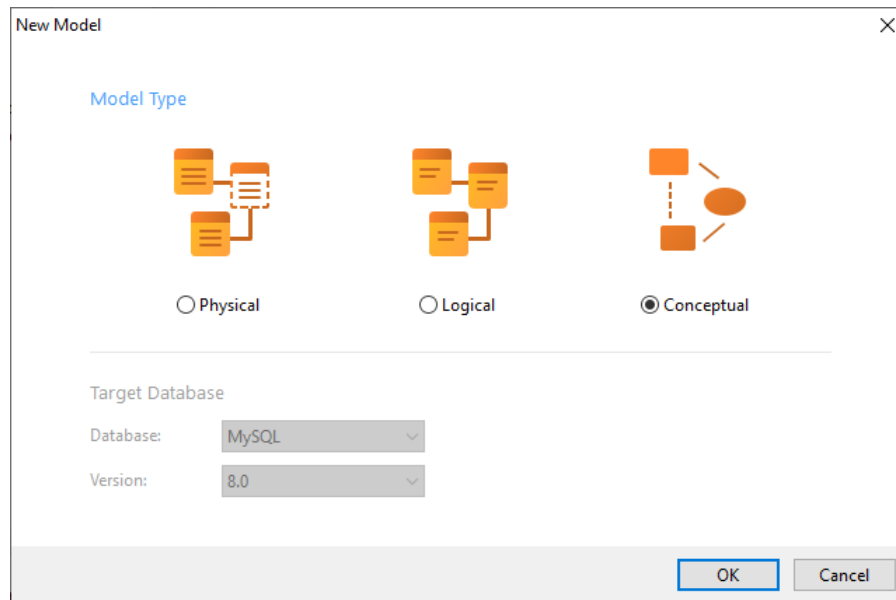
Cardinality on entity_name1	Set the cardinality on entity_name1: None, One and Only One, Many, One or Many, Zero or One, Zero or Many.
Cardinality on entity_name2	Set the cardinality on entity_name2: None, One and Only One, Many, One or Many, Zero or One, Zero or Many.
Add Vertex	Add a vertex on a relation connector.
Delete Vertex	Delete a vertex on a relation connector.
Delete All Vertices	Delete all vertices on a relation connector.
Go to Source	Go to and select the source (child) entity.
Go to Target	Go to and select the target (parent) entity.
Paste	Paste the content from the clipboard into the diagram.
Select All Relations	Select all relations in the diagram.
Delete from Diagram and Model	Delete a relation from both diagram and model.
Color	Change the color of the relation.

Chapter 7 - Conceptual Model

About Conceptual Model

Navicat Data Modeler allows you to create conceptual models, including entities and relations.


In the **New Model** window, choose **Conceptual** as **Model Type**.

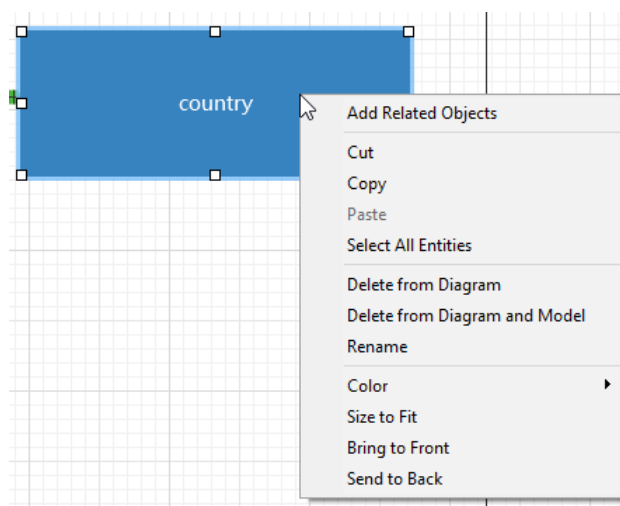


You can also use the following features to create a conceptual model:

- [Import from Database](#) - reverse engineer from existing databases/schemas or ODBC data source.
- [Model Conversion](#) - convert from a physical/logical model.

Add Entities to Conceptual Model


To add a new entity, click the  **Entity** button from the toolbar and click anywhere on the canvas. To add an existing entity from the Explorer's Model tab, simply drag and drop the selected entity from the Model tab to the canvas.



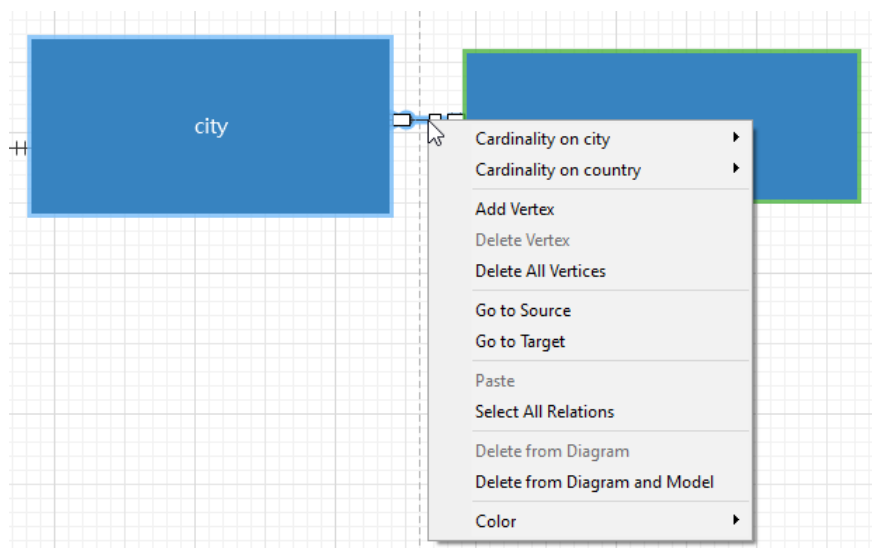
The pop-up menu options of the entity object in the canvas include:

Option	Description
Add Related Objects	Add all related entities to the selected entity.
Cut	Remove the entity from the diagram and put it on the clipboard.
Copy	Copy the entity from the diagram to the clipboard.
Paste	Paste the content from the clipboard into the diagram.
Select All Entities	Select all entities in the diagram.
Delete from Diagram / Delete from Diagram and Model	Delete an entity from the diagram or from both diagram and model.
Rename	Change the name of the entity.
Color	Change the color of the entity.
Size to Fit	Resize the entity automatically to fit its contents.
Bring to Front	Bring the entity to the foreground.
Send to Back	Move the entity to the background.

Add Relations to Conceptual Model

To add a relation, click the  **Relation** button from the toolbar and drag the child entity and drop to the parent entity. To show/hide the linked name label, simply check/uncheck the **Show name** option in the Properties pane.

When you move your mouse over a relation connector, the border of the parent and the child entities turn to green and blue respectively.



The pop-up menu options of the relation in the canvas include:

Option	Description
Cardinality on entity_name1	Set the cardinality on entity_name1: None, One and Only One, Many, One or Many, Zero or One, Zero or Many.
Cardinality on entity_name2	Set the cardinality on entity_name2: None, One and Only One, Many, One or Many, Zero or One, Zero or Many.

Add Vertex	Add a vertex on a relation connector.
Delete Vertex	Delete a vertex on a relation connector.
Delete All Vertices	Delete all vertices on a relation connector.
Go to Source	Go to and select the source (child) entity.
Go to Target	Go to and select the target (parent) entity.
Paste	Paste the content from the clipboard into the diagram.
Select All Relations	Select all relations in the diagram.
Delete from Diagram and Model	Delete a relation from both diagram and model.
Color	Change the color of the relation.

Chapter 8 - Diagram Layout

Work with Diagram Canvas

Show Grid

To turn the grid on in the diagram canvas, choose **View -> Show Grid** from the menu bar.

Snap to Grid

To align objects on the canvas with the grid, choose **View -> Snap To Grid** from the menu bar.

Keep Orthogonal Layout

To keep the lines consisting of horizontal and vertical segments when moving an object, choose **View -> Keep Orthogonal Layout** from the menu bar.

Change Diagram Notation

To change the notation of the diagram, choose **Diagram -> Diagram Notation** from the menu bar.

Note: The options depend on the diagram type you are chosen.

Option	Description
Default	The default notation style used in Navicat Data Modeler.
Simple	A simple notation style. The table, view or entity objects will only show the name.
IE (Crow's Foot)	Crow's Foot notation style.
IDEF1X	The ICAM DEFinition language information modeling method.
UML	Universal Modeling Language style.
Classic	A classic notation style.
Black and White	Change the color of the diagram to black and white.
Show Database Names	Show the database names of the tables and views in the diagram.
Show Schema Names	Show the schema names of the tables and views in the diagram.
Show View Relationships	Show the relationship lines of views in the diagram.

Change Diagram Dimensions

To change the number of pages used in the diagram, choose **Diagram -> Diagram Dimensions** from the menu bar and set the **Width** and the **Height**.

Align Objects

To align objects on the canvas, select more than one object (tables, entities, views, notes, labels, images or shapes), then right-click and select **Alignment** -> **Align Left**, **Align Center**, **Align Right**, **Align Top**, **Align Middle** or **Align Bottom**.


Change Objects Distribution

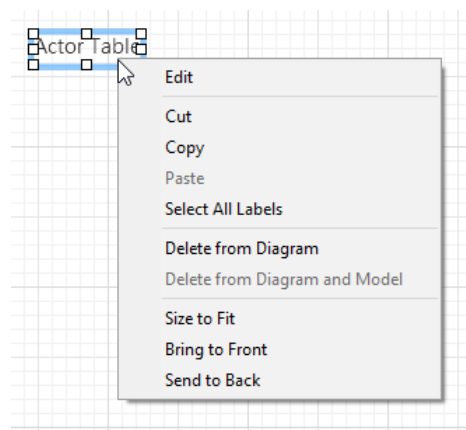
To distribute objects on the canvas, select more than one object (tables, entities, views, notes, labels, images or shapes), then right-click and select **Distribute** -> **Horizontal** or **Vertical**.

Change Page Setup

To change paper size, orientation and margins, choose **File** -> **Page Setup**.

Add Labels


Labels are typically used to help document the diagram design process. For example, to explain a grouping table objects. To add a new label, click the  **Label** button from the toolbar and click anywhere on the canvas.

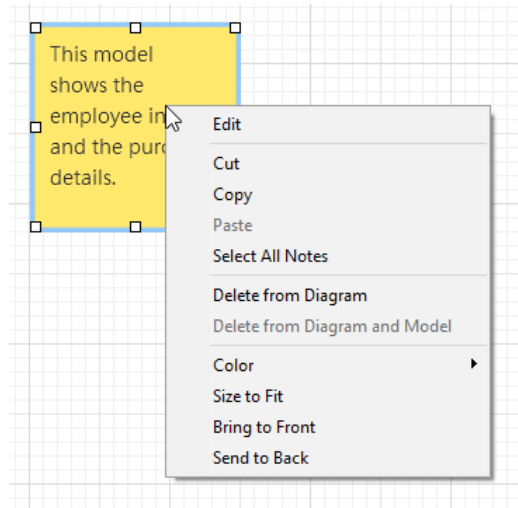


The pop-up menu options of the label object in the canvas include:

Option	Description
Edit	Change the content of the label.
Cut	Remove the label from the diagram and put it on the clipboard.
Copy	Copy the label from the diagram to the clipboard.
Paste	Paste the content from the clipboard into the diagram.
Select All Labels	Select all labels in the diagram.
Delete from Diagram	Delete a label from the diagram.
Size to Fit	Resize the label automatically to fit its contents.
Bring to Front	Bring the label to the foreground.
Send to Back	Move the label to the background.

Add Notes


Notes are typically used to help document the diagram design process. For example, to explain a grouping table objects. To add a new note, click the  **Note** button from the toolbar and click anywhere on the canvas.

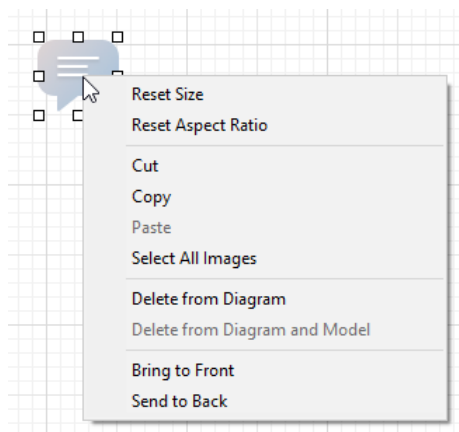


The pop-up menu options of the note object in the canvas include:

Option	Description
Edit	Change the content of the note.
Cut	Remove the note from the diagram and put it on the clipboard.
Copy	Copy the note from the diagram to the clipboard.
Paste	Paste the content from the clipboard into the diagram.
Select All Notes	Select all notes in the diagram.
Delete from Diagram	Delete a note from the diagram.
Color	Change the color of the note.
Size to Fit	Resize the note automatically to fit its contents.
Bring to Front	Bring the note to the foreground.
Send to Back	Move the note to the background.

Add Images


You can insert images (BMP, JPG, JPEG or PNG files) to your model for design or identification purposes. To add a new image, click the  **Image** button from the toolbar and click anywhere on the canvas. Then, select an image file in the Open dialog box.

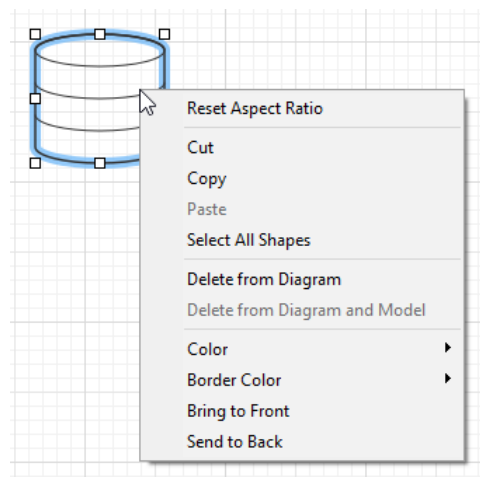


The pop-up menu options of the image object in the canvas include:

Option	Description
Reset Size	Reset the size of the image to its original size.
Reset Aspect Ratio	Maintain the image original width to height ratio.
Cut	Remove the image the diagram and put it on the clipboard.
Copy	Copy the image from the diagram to the clipboard.
Paste	Paste the content from the clipboard into the diagram.
Select All Images	Select all images in the diagram.
Delete from Diagram	Delete an image from the diagram.
Bring to Front	Bring the image to the foreground.
Send to Back	Move the image to the background.

Add Shapes

Navicat Data Modeler includes some pre-defined shapes for creating database model diagrams: line, arrow, rectangle, ellipse, user, database, cloud, trigger, server, desktop, laptop, mobile, man, woman. To add a new shape, click the  **Shape** button from the toolbar and choose the type of shape. Then, click anywhere on the canvas. To show/hide the linked name label, simply check/uncheck the **Show name** option in the Properties pane.




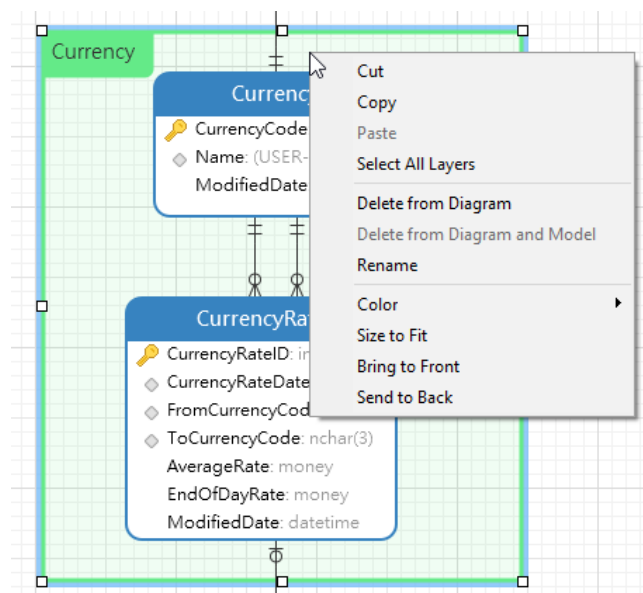
The pop-up menu options of the shape object in the canvas include:

Option	Description
Reset Aspect Ratio	Maintain the shape original width to height ratio. Only for rectangle, ellipse, user, database, cloud, trigger, server, desktop, laptop, mobile, man, woman.
Cut	Remove the shape from the diagram and put it on the clipboard.
Copy	Copy the shape from the diagram to the clipboard.
Paste	Paste the content from the clipboard into the diagram.
Select All Shapes	Select all shapes in the diagram.
Delete from Diagram	Delete a shape from the diagram.
Color	Change the color of the shape.

Border Color	Change the color of the shape's border. Only for rectangle, ellipse, user, database, cloud, trigger, server, desktop, laptop, mobile, man, woman.
Begin Arrow Style	Change the style of the arrow's back. Only for arrow.
End Arrow Style	Change the style of the arrow's front. Only for arrow.
Add Vertex	Add a vertex on a line or arrow. Only for line and arrow.
Delete Vertex	Delete a vertex on a line or arrow. Only for line and arrow.
Delete All Vertices	Delete all vertices on a line or arrow. Only for line and arrow.
Bring to Front	Bring the shape to the foreground.
Send to Back	Move the shape to the background.

Add Layers

Layers are used to help organize objects (e.g. tables, notes, images, etc) on the canvas. You can add all related objects to the same layer. For example, you may choose to add all your sales related tables to one layer. To add a new layer, click the  **Layer** button from the toolbar and click anywhere on the canvas.



The pop-up menu options of the layer object in the canvas include:

Option	Description
Cut	Remove the layer from the diagram and put it on the clipboard.
Copy	Copy the layer from the diagram to the clipboard.
Paste	Paste the content from the clipboard into the diagram.
Select All Layers	Select all layers in the diagram.

Delete	Delete a layer from the diagram.
Color	Change the color of the layer.
Size to Fit	Resize the layer automatically to fit its contents.
Bring to Front	Bring the layer to the foreground.
Send to Back	Move the layer to the background.

Chapter 9 - Connection

Manage Connections

You can manage the connections stored in your local machine, or the connections synchronized to Navicat Cloud or your On-Prem Server. In the menu bar, choose **Tools** -> **Manage Connections**.

Create New Connections

1. In the Manage Connections window, select My Connections or a project.
2. Click **New** and select **New Connection**, and then select the server type.
3. Enter the server login information in the New Connection window.

Manage Existing Connections

To edit a connection

1. In the Manage Connections window, right-click a connection and select **Edit Connection**.
2. Change the connection settings.
3. Click **OK**.

To delete a connection

1. In the Manage Connections window, right-click a connection and select **Delete Connection**.
2. Click **Delete** in the confirm dialog.

Import Connection Settings

To import Navicat (e.g. [Navicat Premium](#)) connection settings

1. In the Manage Connections window, right-click My Connections and select **Import Connections from Navicat**.
2. Select the connections and click **OK**.

Note: Available only when Navicat (e.g. Navicat Premium) is installed in the current machine. If the connection exists, the newly created connection will be named as e.g. "connection_name Copy #".

Database Connections (Available only in Non-Essentials Edition)

Connect to Database Servers

You can create a connection to connect your server: MySQL, MariaDB, PostgreSQL, Oracle, SQLite, SQL Server.

Note: The tabs in the connection properties window depend on the database type you are chosen.

- [General Settings](#)
- [Advanced Settings](#)
- [Databases / Attached Databases Settings](#)
- [SSL Settings](#)
- [SSH Settings](#)
- [HTTP Settings](#)
- [Compatibility Settings](#)

General Settings

To successfully establish a new connection to local/remote server - no matter via SSL, SSH or HTTP, set the database login information in the General tab. If your Internet Service Provider (ISP) does not provide direct access to its server, Secure Tunneling Protocol (SSH) / HTTP is another solution.

Note: The following options depend on the connection server type and sort in ascending order.

Add To

After you logged in [Navicat Cloud](#) or [On-Prem Server](#), you can choose to save the connection to My Connections or a project.

Authentication

SQL Server Authentication	Use login records to validate the connection. Users must provide their server login: User Name and Password .
Windows Authentication	When a user connects through a Windows user account, SQL Server validates the account name and password using the Windows principal token in the operating system.

Connection Name

Enter a friendly name to best describe your connection.

Connection Type

Basic	In Basic mode, it connects to Oracle through the Oracle Call Interface (OCI). Enter the Host and Port . Set the Service Name/SID which the user connects when making connection. Select the corresponding radio button.
TNS	In TNS mode, it connects to Oracle server using an alias entry from a tnsnames.ora file through the Oracle Call Interface (OCI). User needs to provide the Net Service Name .

OCI is an application programming interface that allows an application developer to use a third-generation language's native procedure or function calls to access the Oracle database server and control all phases of SQL statement execution. OCI is a library of standard database access and retrieval functions in the form of a dynamic-link library. See also: [OCI options](#)

Database File

Specify the initial database file. If the HTTP Tunnel is enabled, you need to enter an absolute file path of the database file in your web server.

Host

A host name where the database is situated or the IP address of the server.

Initial Database

Set the initial database which user connects when making connection.

Password

Password for connecting to the database server.

Port

A TCP/IP port for connecting to the database server.

Type

Existing Database File	Connect to an existing database in the Database File .
New SQLite 3	Create a new SQLite 3 database in the Database File .
New SQLite 2	Create a new SQLite 2 database in the Database File .

User Name

User name for connecting to the database server.

Advanced Settings

Note: The following options depend on the connection server type and sort in ascending order.

Client Character Set

Choose the session client character set used in Navicat Data Modeler.

Client Driver Version

Choose the client driver used to connect the server. If the default driver does not work, you can change this setting to Legacy.

Compatibility

Enable the Compatibility tab for setting the compatibility mode for MySQL connection.

Encoding

Choose a codepage for converting data to display in Navicat Data Modeler UI.

Encrypted

Enable this option and provide **Password** when connecting to an encrypted SQLite database.

Limit connection sessions

Specify the maximum number of concurrent connections that the server allows.

Native Client Driver

Choose the SQL Server Native Client used for the connection.

OS authentication

Use OS user login credentials to authenticate database users.

Role

Indicate that the database user is connecting with either the Default, SYSOPER or SYSDBA system privilege.

Use compression

Use compression protocol. It is used if both client and server support zlib compression, and the client requests compression.

Use encryption

Use encryption for SQL Server connection.

Use named pipe, socket

Use socket file for localhost connection.

Databases / Attached Databases Settings

MySQL, Oracle, PostgreSQL, SQL Server, MariaDB

In the **Databases** tab, you can set which databases will be shown in the Import from Database window. It is not obligatory. To start working with custom database settings, check **Use custom database list**. Then, check the preferable databases in the **Database** column.

Add a hidden database to the list

1. Click the **Add Database to List** button.

2. Enter the database name.
3. Check the newly added database in the database list.

Remove a database from the list

1. Select the database in the database list.
2. Click the **Remove Database from List** button.

Note: The database will be just removed from the database list box, it will still exist in the server.

SQLite

In the **Attached Databases** tab, you can attach SQLite database files to the connection. Click the **Attach Database** button and enter the information:

Option	Description
Database File	Choose the file path of a database file.
Database Name	Enter the database name which displays in Navicat Data Modeler.
Encrypted	Check this option and provide the Password if the database file is encrypted.

To detach a database, select it from the list and click the **Detach Database** button.

SSL Settings

Secure Sockets Layer (SSL) is a protocol for transmitting private documents via the Internet. To get a secure connection, the first thing you need to do is to install OpenSSL Library and download Database Source.

Note: Available only for MySQL, PostgreSQL and MariaDB. Support from PostgreSQL 8.4 or later.

MySQL and MariaDB Connections

To provide authentication details, enable **Use Authentication** and fill in the required information:

Client Key

The SSL key file in PEM format to use for establishing a secure connection.

Client Certificate

The SSL certificate file in PEM format to use for establishing a secure connection.

CA Certificate

The path to a file in PEM format that contains a list of trusted SSL certificate authorities.

Verify CA Certificate Name

Check the server's Common Name value in the certificate that the server sends to the client.

Specified Cipher

A list of permissible ciphers to use for SSL encryption.

PostgreSQL Connection

Choose the **SSL Mode**:

require	Only try an SSL connection.
verify-ca	Only try an SSL connection, and verify that the server certificate is issued by a trusted CA.
verify-full	Only try an SSL connection, verify that the server certificate is issued by a trusted CA and that the server hostname matches that in the certificate.

To provide authentication details, enable **Use Authentication** and fill in the required information:

Client Key

The path of the client private key.

Client Certificate

The path of the client certificate.

CA Certificate

The path of the trusted certificate authorities.

Certificate Revocation List

The file path of the SSL certificate revocation list (CRL).

SSH Settings

Secure SHell (SSH) is a program to log in into another computer over a network, execute commands on a remote server, and move files from one machine to another. It provides strong authentication and secure encrypted communications between two hosts, known as **SSH Port Forwarding (Tunneling)**, over an insecure network. Typically, it is employed as an encrypted version of Telnet.

In a Telnet session, all communications, including username and password, are transmitted in plain-text, allowing anyone to listen-in on your session and steal passwords and other information. Such sessions are also susceptible to session hijacking, where a malicious user takes over your session once you have authenticated. SSH serves to prevent such vulnerabilities and allows you to access a remote server's shell without compromising security.

Note: Available only for MySQL, Oracle, PostgreSQL, SQL Server and MariaDB.

Please make sure that the parameter - "AllowTcpForwarding" in the Linux server must be set to value "yes", otherwise, the SSH port forwarding will be disabled. To look for the path: /etc/ssh/sshd_config. By default, the SSH port forwarding should be enabled. Please double check the value settings.

Even the server support SSH tunnel, however, if the port forwarding being disabled, Navicat Data Modeler cannot connect via SSH Port 22.

Host

A host where SSH server is activated.

Note: The host name in the General tab should be set relatively to the SSH server which provided by your database hosting company.

Port

A port where SSH server is activated, by default it is 22.

User Name

A user on SSH server machine. (It is not a user of database server.)

Authentication Method

Password	Provide the SSH server user Password .
Public Key	Private Key It is used together with your public key. The private key should be readable only by you. Passphrase A passphrase is exactly like a password, except that it applies to the keys you are generating and not an account.

Note: HTTP Tunnel and SSH Tunnel cannot be function simultaneously. The SSH Tunnel is disabled when you select the HTTP Tunnel and vice versa.

HTTP Settings

HTTP Tunneling is a method for connecting to a server that uses the same protocol (http://) and the same port (port 80) as a web server does. It is used while your ISPs do not allow direct connections, but allows establishing HTTP connections.

Note: Available only for MySQL, PostgreSQL, SQLite and MariaDB.

Uploading the Tunneling Script

To use this connection method, first thing you need to do is to upload the tunneling script to the web server where your server is located.

Note: `ntunnel_mysql.php` (for both MySQL and MariaDB), `ntunnel_pgsql.php` or `ntunnel_sqlite.php` is available in the Navicat Data Modeler installation folder.

Setting up HTTP Tunnel

The following instruction guides you through the process of configuring a HTTP connection.

1. Select the HTTP tab and enable **Use HTTP Tunnel**.
2. Enter URL of the tunneling script, e.g. `http://www.navicat.com/ntunnel_mysql.php`.
3. If your server installed a Web Application Firewall, you can check the **Encode outgoing query with base64** option.
4. If the tunneling script is hosted in a password protected server or you have to access internet over a proxy server, you can provide the required authentication details in **Authentication** or **Proxy** tab.

Note: HTTP Tunnel and SSH Tunnel cannot be function simultaneously. The SSH Tunnel is disabled when you select the HTTP Tunnel and vice versa.

Compatibility Settings

If your server is a variant of MySQL or has proxy middleware installed, you can enable compatibility mode and set the corresponding settings for the connection.

Note: Available only for MySQL.

Force lower_case_table_names as

Set the value of the `lower_case_table_name` system variable.

Force sql_mode as

Set the value of the `sql_mode` system variable.

Force NDB cluster support as

Include or exclude the support for the NDBCLUSTER storage engine.

Force database listing method as

Use the `SHOW DATABASES` statement to retrieve the information for listing databases, or select the information from the `INFORMATION_SCHEMA` database.

Force view listing method as

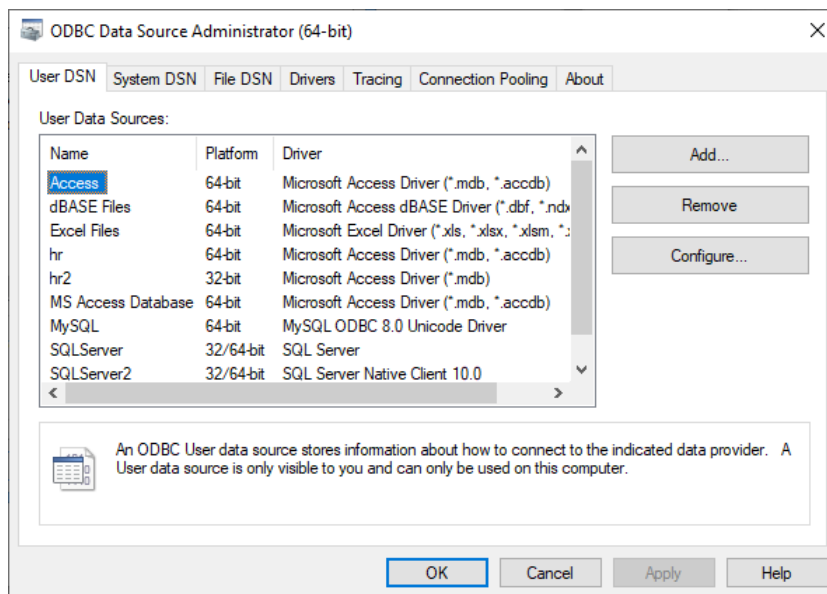
Use the `SHOW FULL TABLES` statement to retrieve the information for listing tables, or select the information from the `INFORMATION_SCHEMA` database.

ODBC Connections (Available only in Non-Essentials Edition)

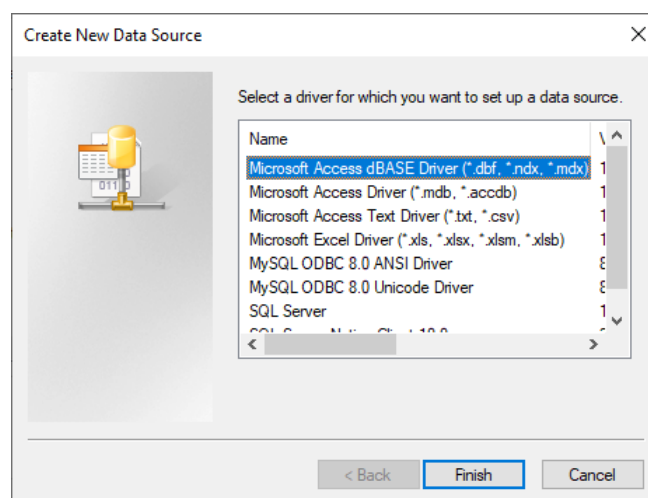
You can create an ODBC connection to connect your ODBC data source. The following instruction guides you through the process of creating a new ODBC connection.

Setting Up an ODBC Data Source Connection

1. On the Control Panel, select **Administrative Tools**.
2. Select **Data Sources (ODBC)**.
3. Select **User DSN** tab.



4. Click **Add**.
5. Select the correct ODBC driver you wish and click **Finish**.



6. Enter the required information.
7. Select **OK** to see your ODBC Driver in the list.

Connecting to ODBC data source in Navicat Data Modeler

Connection Name

A friendly name to best describe your connection.

Data Source

A data source name.

User Name

User name for connecting to the data source.

Password

Password for connecting to the data source.

Chapter 10 - Reverse Engineering (Available only in Non-Essentials Version)

Import from Database

The **Import from Database** feature allows you to load already existing database structures to create new diagrams. It supports to import MySQL, MariaDB, PostgreSQL, Oracle, SQLite, SQL Server tables/views, and also from ODBC data source. If the model is logical or conceptual, all views will convert to entities after the import process. To start the Import from Database wizard, choose **Tools** -> **Import from Database** from the menu bar.

If it is the first time you open the wizard, you require to establish your server connection before selecting the connection. Click the **Manage Connections** button to create, edit or delete connections.

- [MySQL/MariaDB/PostgreSQL/Oracle/SQLite/SQL Server](#)
- [ODBC](#)

After selecting the connection, you are allowed to choose databases, schemas, tables or views to import. If your diagram is logical and conceptual, views will be imported as entities. Click **Start** to start the import process.

Chapter 11 - Forward Engineering (Available only in Non-Essentials Version)

Forward Engineer Physical Model

Navicat Data Modeler provides two forward engineering tools for you to generate physical databases or a script file from a physical model.

- [Synchronize to Database](#) - compare and synchronize to an actual database.
- [Export SQL](#) - generate a SQL file with customized settings.

Synchronize to Database

The **Synchronize to Database** feature allows you to compare a model with an existing database or schema, states the differences between their structures, and offers synchronizing the structures in model to the target connection. To start the Synchronize to Database wizard, choose **Tools** -> **Synchronize to Database** from the menu bar.

Note: This feature is only available for Physical Models.

Choose Connections

The first step is to define connections, databases and/or schemas for the source model and the target connection.

You can click the **Manage Connections** button to view and edit connections in Navicat Data Modeler. See [Database Connections](#) for details.

Choose Comparing Options

Then, click the **Options** button to select the comparing options for the synchronization process.

Note: The following options depend on the diagram database type you are chosen.

Compare auto increment value

Check this option if you want to compare the auto increment values of tables.

Compare character set

Check this option if you want to compare the character sets of tables.

Compare checks

Check this option if you want to compare checks.

Compare collation

Check this option if you want to compare the collations of tables.

Compare definers

Check this option if you want to compare the definers of views.

Compare excludes

Check this option if you want to compare excludes.

Compare foreign keys

Check this option if you want to compare table foreign keys.

Compare identity last value

Check this option if you want to compare the identity last values of tables.

Compare indexes

Check this option if you want to compare indexes.

Compare owners

Check this option if you want to compare the owners of the objects.

Compare partitions

Check this option if you want to compare table partitions.

Compare primary keys

Check this option if you want to compare table primary keys.

Compare rules

Check this option if you want to compare rules.

Compare storage

Check this option if you want to compare table storages.

Compare table options

Check this option if you want to compare other table options.

Compare tables

Check this option if you want to compare tables.

Compare triggers

Check this option if you want to compare triggers.

Compare uniques

Check this option if you want to compare uniques.

Compare views

Check this option if you want to compare views.

Drop with CASCADE

Check this option if you want to drop the dependent database objects with the CASCADE option.

Identifier Case Sensitivity

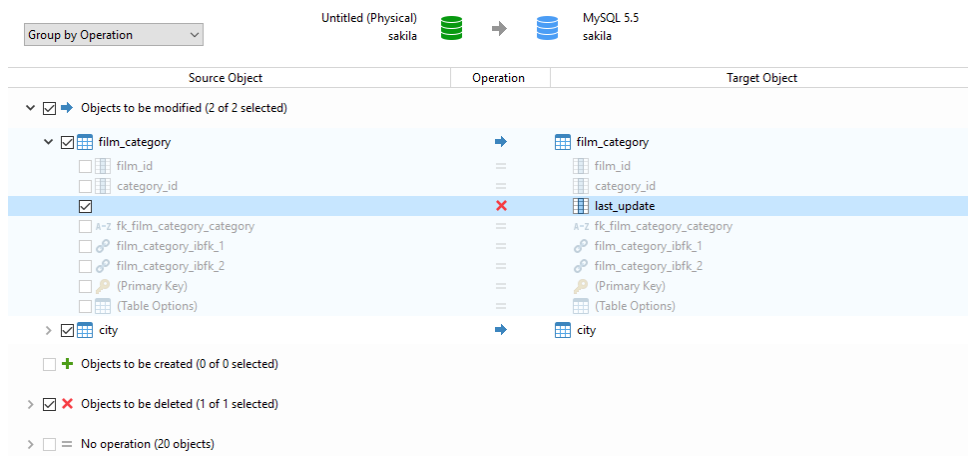
Ignore or consider the case of identifiers when mapping, or use the server default setting.

Start Comparison

Click the **Compare** button to compare the source model and the target database.

View Comparison Results

After comparing structures, the tree view shows the differences between the source and target databases or schemas. All objects are checked in the tree view by default. Uncheck the objects you do not want to apply to the target. You can expand the table objects to view the detailed structure.



You can choose to group the objects in the tree views by object types or operations by selecting **Group by Object Type** or **Group by Operation**.

Operation	Description
	Object exists in both source and target databases/schemas, but they have different definition. The target object will be modified based on the source object.
	Object does not exist in the target database/schema. It will be created in the target.

✗	Object does not exist in the source database/schema. The target object will be deleted.
=	Object exists in both source and target databases/schemas and they have identical definition. No operation will be applied.

When you selected an object in the tree view, the **DDL Comparison** tab shows the DDL statements of that object in the source and the target, and the **Deployment Script** tab shows the detailed SQL statements of the object that will be executed in the target databases.

The screenshot displays the DDL Comparison and Deployment Script tabs. The top section shows a comparison between 'Source Object' and 'Target Object' for 'film_category'. The 'Source Object' column lists 'film_id', 'category_id', 'last_update', and various foreign keys. The 'Target Object' column lists 'film_id', 'category_id', 'last_update', and various foreign keys. The 'Operation' column shows '=' for most objects, but a red '✗' is shown for 'last_update'. Below this, the 'DDL Comparison' tab shows the DDL statements for 'film_category' in the source and target databases. The 'Deployment Script' tab shows the SQL statements for 'film_category' in the target database.

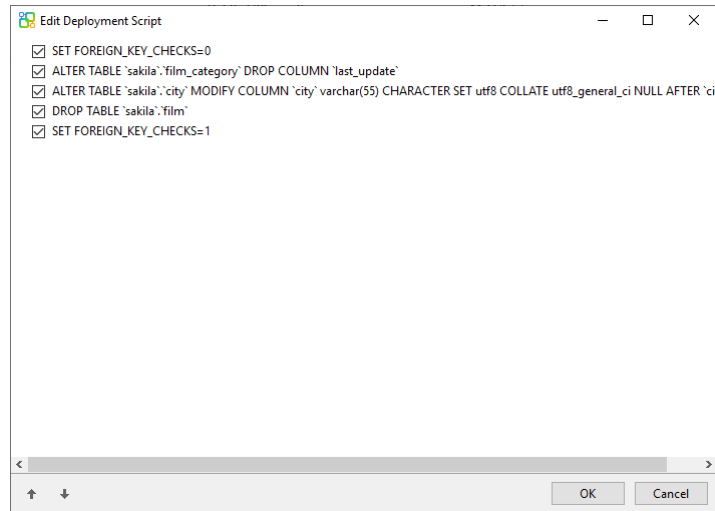
Click the **Next** button to show the scripts of all selected objects.

Edit & Execute Selected Scripts

You can view all scripts that will be executed in the target database in the **Deployment Script** tab.

Deployment Options Button	Description
Deployment Options	Continue on error - Ignore errors that are encountered during the execution process if necessary.
Edit Script	Open the Edit Deployment Script window to rearrange the order of the scripts.
Copy Script to Clipboard	Copy all scripts from the Deployment Script tab to the clipboard.

In the **Edit Deployment Script** window, use the arrow buttons to move the scripts.



Then, click the **Start** button to execute the scripts. The window will display the execution progress, execution time, and success or failure messages.

Export SQL

After finishing your model, you can save table structures and relations from the model into a script file. The **Export SQL** feature generates a SQL file for the script. To start the Export SQL feature, choose **Tools -> Export SQL** from the menu bar.

Note: This feature is only available for Physical Models.

General Properties

File

Set the output file name and location.

Objects

Choose objects in the model you wish to export.

Advanced Properties

Note: The following options depend on the diagram database type you are chosen.

Include auto increment

Include table auto increment values in the SQL file with this option is on.

Include character set

Include table and field character set in the SQL file with this option is on.

Include checks

Include checks in the SQL file with this option is on.

Include collation

Include table collation in the SQL file with this option is on.

Include Drop SQL

Include drop object SQL statements in the SQL file with this option in on.

Include Drop With CASCADE

Include drop object SQL statements with the CASCADE option in the SQL file with this option in on.

Include excludes

Include excludes in the SQL file with this option is on.

Include foreign keys

Include foreign keys in the SQL file with this option is on.

Include indexes

Include indexes in the SQL file with this option is on.

Include primary keys

Include primary keys in the SQL file with this option is on.

Include rules

Include rules in the SQL file with this option is on.

Include schema

Include the schema names in the SQL file with this option is on. Otherwise, only object names are included in SQL statements.

Include triggers

Include triggers in the SQL file with this option is on.

Include uniques

Include uniques in the SQL file with this option is on.

Server Version

Select the server version for the SQL file.

Chapter 12 - Other Advanced Tools

Useful Features

Navicat Data Modeler provides variety of tools that improve user experience when working on models.

- [Model Conversion](#)
- [Auto Layout](#)
- [Print and Export Model](#)
- [Virtual Grouping](#)
- [Search Filter](#)
- [Dark Theme](#)
- [Full Screen Mode](#)

Model Conversion

Navicat Data Modeler allows you to convert your models from one database type to another database type and also from one model type to another model type, e.g. MariaDB 10.0 physical model to PostgreSQL 9.0 physical model, Oracle 10g physical model to a logical model, a conceptual model to MySQL 5.0 physical model.

During the conversion, all data types are converted automatically. The conversion process does not change the SQL syntax of views if converting from one database type to another. If you convert a physical model to logical/conceptual model, all views will be converted to entities. If the target database version is MySQL 4.0 or below, all views will be removed.

To convert an opened model file, choose **File -> Convert Model To**. Then, choose the **Model Type** and select the target **Database** and **Version** if necessary.

Auto Layout (Available only in Non-Essentials Version)

To automatically arrange objects on the canvas, click the  **Auto Layout** button. To change the Auto Layout format settings, simply choose **Diagram -> Auto Layout with** from the menu and set the following options:

Auto Diagram Dimension

Choose the suitable diagram dimension automatically.

Auto Size Tables To Fit

Resize the table to fit its content automatically.

Quality

The quality of the auto layout output.

Object Distance

The distance between the objects in the diagram.

Print & Export Model

Preview a model

To preview the pages before printing, simply click the  **Print Preview** button. The model can be printed to the printer or exported to various file formats.

Print to a printer

Choose **File -> Print** to send your diagram directly to the printer. You can set the printer option in the pop-up window.

Export to a file

Choose **File -> Export To** and choose the file format to create a PDF, PNG, SVG or JPG file of your diagram.

Virtual Grouping (Available only in Non-Essentials Edition)

Virtual Group aims to provide a platform for logical grouping objects by categories, so that all objects are effectively preserved. It can be applied on all connections, and models in Navicat Cloud / On-Prem Server.

Connections

Create a new group

1. In the menu bar, choose **Tools -> Manage Connections**.
2. In the Manage Connections window, right-click My Connections or a project and select **New Group**.
3. Enter a name for the new group.

Move a connection to a group

1. In the Manage Connections window, right-click a connection and select **Manage Group -> Move To**.
2. Select an existing group.

Move a connection to the top-level

1. In the Manage Connections window, right-click a connection and select **Manage Group -> Exclude From Group**.

Hint: You can also use the drag and drop method to move objects.

Models

Create a new group

1. In the main window, select Navicat Cloud or your On-Prem Server.
2. Open a project.
3. Right-click anywhere in the project and select **New Group**.
4. Enter a name for the new group.

Move a model file to a group

1. In the main window, right-click a model and select **Manage Group -> Move To**.
2. Select an existing group.


Move a model file to the top-level

1. In the main window, right-click a model and select **Manage Group -> Exclude From Group**.

Hint: You can also use the drag and drop method to move objects.

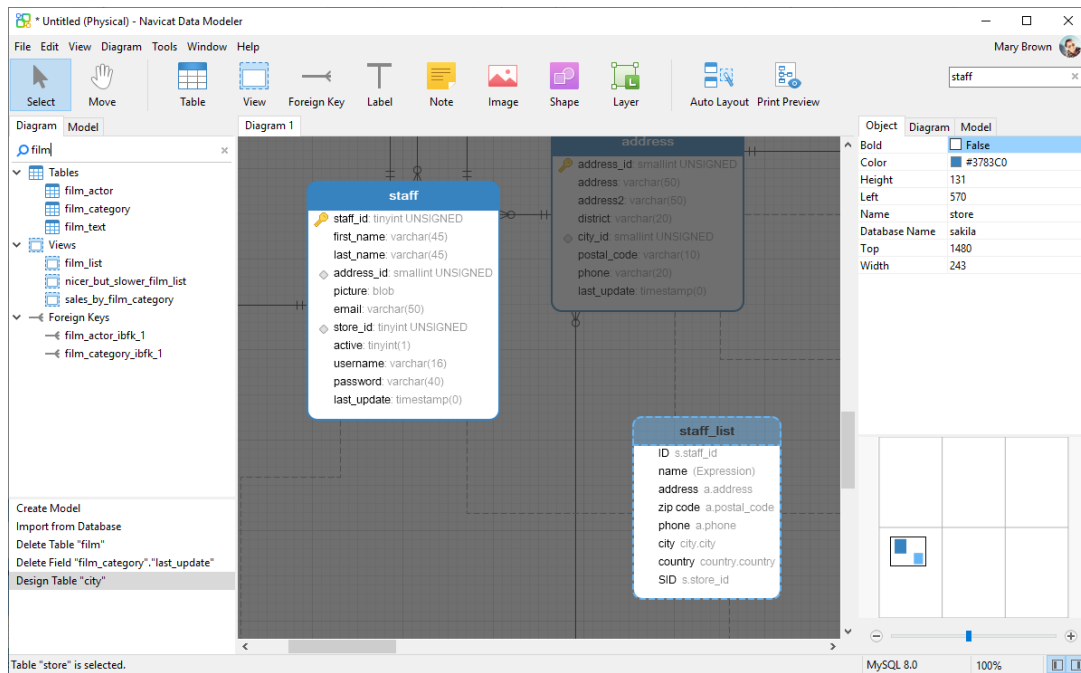
Search Filter

Navicat Data Modeler provides search filters for searching your objects in the main window, the canvas and tree structures.

In the main window or the canvas, enter a search string in the  **Search** text box.

In the tree structures, click on the tree to focus and enter a search string directly.

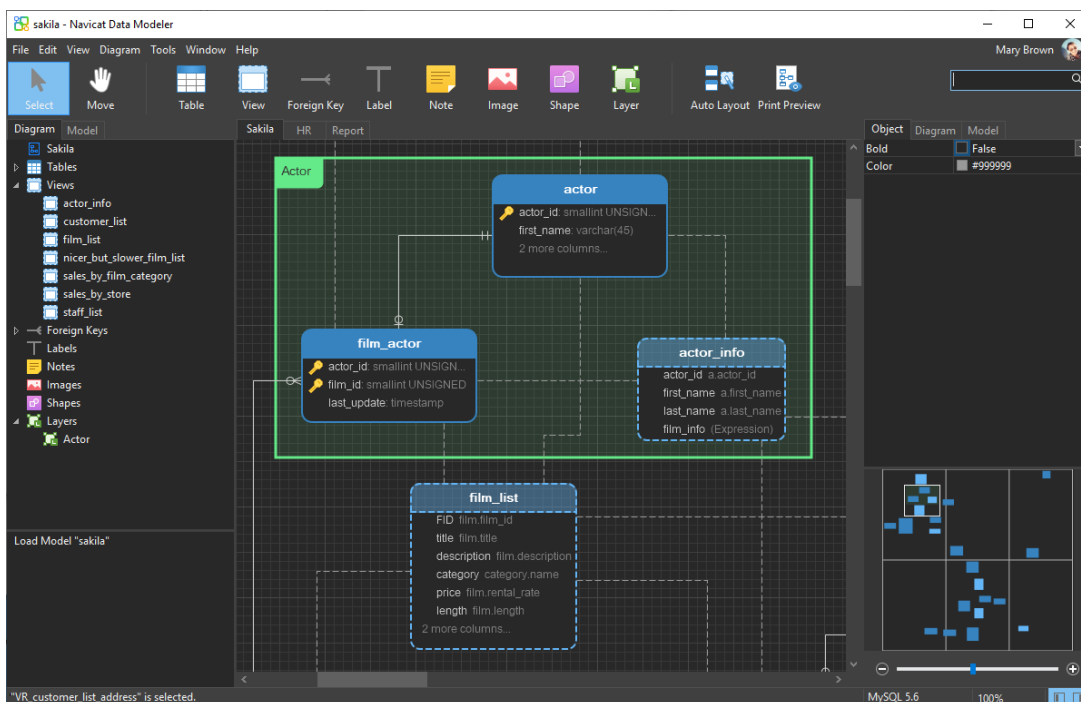
You can remove the filter by deleting the search string.



Dark Theme

In Dark Theme, Navicat Data Modeler uses a darker color palette for all windows, views, menus, and controls. It works on all supported version of Windows.

To change your theme, choose **Tools -> Options -> General**. Then, select **Dark**.



Full Screen Mode

Edit the model using the whole screen. The title bar that normally displays as part of the Navicat Data Modeler application will be hidden while in this mode.

Choose **View -> Full Screen** in the menu bar or simply press F11 to start the full screen mode.

When the full screen mode is cancelled, the Navicat Data Modeler window will be returned to its previous state.

Chapter 13 - Configurations

Options Settings

Navicat Data Modeler provides several options for customizing its user interface and performance.

To open the Options window, choose **Tools -> Options** from the menu bar.

General

General

Theme

Choose to use the theme of your Windows OS or a Dark theme.

Hint: Restart Navicat Data Modeler to take effect.

Show toolbar caption

Show text on toolbar buttons in Navicat Data Modeler. Otherwise, only buttons will be presented.

Hint: Restart Navicat Data Modeler to take effect.



Use safe confirm dialog (Main Window)

With this option is on, Navicat Data Modeler will prompt a double confirmation dialog for safe deletion when deleting objects in the main window.

Check for updates on startup

Check this option to allow Navicat Data Modeler checks for new version when it starts.

Usage Data

Share Usage Data

Check this option to let your device sends us information about how you use Navicat Data Modeler to help us improve it. You can view the information being shared by clicking the **Usage Data** button.

Code Completion (Available only in Non-Essentials Edition)

Use code completion

When you type the . (dot) symbol or a character, the editor will offer you a pop-up list that showing some suggestions for the code completion.

Auto update code completion info

With this option is on, Navicat Data Modeler will get the latest database information for the code completion from your model.

Clear Code Completion Info

Delete the information for code completion feature that stored on your device.

Auto select first suggestion

Select the first item automatically when the suggestion list pops up. Therefore, pressing ENTER or TAB will insert the selected item. Otherwise, you need to use arrow keys to select the suggestion item.

Model

Hint: Restart Navicat Data Modeler to take effect.

Highlight Objects

With this option is on, when a mouse cursor hovers over an object, Navicat Data Modeler will highlight its border with blue color

Highlight With Relation

With this option is on, when a mouse cursor hovers over a table, a entity or a view, Navicat Data Modeler will highlight it's foreign keys, relations or view relations with blue or green color indicating relationships with other objects.

Guess Field Type

With this option is on, Navicat Data Modeler will [predict field types](#) when you design fields/attributes in tables or entities.

Editor

General

Show line number

Display line numbers at the left side of the editor for easily reference.

Use code folding

Code folding allows codes to collapse as a block and only the first line displayed in the editor.

Use brace highlighting

Highlight the pair of braces when your cursor moves to either one brace for easily reference.

Use syntax highlighting

Syntax highlight helps viewing codes clearly. Codes are highlighted in the editor with different colors and fonts according to the categories they belong to. This feature can be limited by setting the maximum file size (e.g. 10) in

Disable if file size is larger than (MB) to increase performance.

Use word wrap

Enable the word wrap mode in the editor.

Tab Width

Enter the number of characters that a tab occupies, e.g. 5.

See [Edit View's Definition](#).

Font and Colors

Editor Font

Define the font and its size used by editors.

Colors

Format your queries in the editor with colored syntax highlighting to improve readability. Set font colors to mark out different text fragments: Common, Keyword, String, Number, Comment and Background. Click on the color boxes and choose your desired color from the Color-Selection dialog window.

Auto Recovery

Model

Save automatically after modifications in models by defining the **Auto Save Interval (seconds)** (e.g. 30).

File Locations

Logs Location

Navicat Data Modeler provides number of [log files](#) to keep track on the actions have been performed in Navicat Data Modeler and they are located in the Logs Location path.

Profiles Location

The internal files of Navicat Data Modeler are located in the Profiles Location path.

Connectivity

General

Verify server certificate against CA

Enable this option to verify that the server certificate against the list of trusted CA.

Proxy

Enable the **Use proxy** option to configure Navicat Data Modeler to use proxy in order to make its network connections.

Proxy Type

Specify the type of your proxy server: HTTP or SOCKS5.

Host

The host name of your proxy server.

Port

The port number of your proxy server.

User Name / Password

If your proxy server requires authentication, you can enter a username and a password.

Connectivity Diagnosis

Click **Test Connectivity** to test the network connectivity between the web service and your machine.

Environment

Hint: Restart Navicat Data Modeler to take effect.

OCI library (oci.dll)

Specify the location of the OCI library (oci.dll) for Oracle connection. By default, it is set to the bundled one in Navicat Data Modeler installation folder.

Oracle Instant Client is the simplest way to deploy a full Oracle Client application built with OCI, OCCI, JDBC-OCI, or ODBC drivers. It provides the necessary Oracle Client libraries in a small set of files. You can also download Oracle Instant Client through -

[Oracle Instant Client](#)

Download the appropriate Instant Client packages for your platform and the CPU. All installations REQUIRE the Basic or Basic Lite package. Unzip the packages and set the path points to it.

Advanced

Enable diagnostic logging

Generate a log file in [Logs Location](#) to assist with tracking down any problems in Navicat Data Modeler.

Hint: Restart Navicat Data Modeler to take effect.

Register on "Open with" List

Register Navicat Data Modeler program to the "Open with" list in Windows.

Register Navicat URI Protocol

Register Navicat URI protocol in Windows. When clicking a Navicat URI link, Navicat Data Modeler opens and adds the corresponding Navicat On-Prem Server using the parameters in the URI.

Chapter 14 - Hints and Tips

Model Hints and Tips

Navicat Data Modeler provides some useful hints to work on the model more effectively.

Locate Object in the Diagram Canvas

Object selected in the Explorer's Diagram tab will be highlighted in the Diagram Canvas.

Double-click an object in the Explorer's Diagram tab will jump to the corresponding object in the Diagram Canvas.

Delete Object from Model

Select an object in the Diagram Canvas and press SHIFT+DELETE.

Open Table/Entity/View Designer

Double-click a table/entity/view in the Explorer's Model Tab or the Diagram Canvas.

Get Table/View Structure (SQL Statement)

Select and copy a table/view in the Diagram Canvas, and paste it to other text editors.

Design Field without Table/Entity Designer

Select and click a table/entity name and press TAB/DOWN ARROW to add/edit fields. Navicat Data Modeler will predict field types according to field names you entered.

Note: Available only for Physical Models and Logical Models.

INTEGER/int/int4/NUMBER

- suffix "id", "no" (if it is the first column, it will be predicted as a primary key)
- suffix "num"
- "qty", "number"
- exactly "age", "count"

DECIMAL(10,2)/decimal(10,2)/NUMBER/REAL/money

- suffix "price", "cost", "salary"

FLOAT/double/float8/NUMBER/REAL/float

- "size", "height", "width", "length", "weight", "speed", "distance"

DATE/datetime/date/TEXT/datetime2

- "date", "time"


VARCHAR(255)/varchar(255)/VARCHAR2(255)/TEXT

- other field names


Enter * before the field name to recognize as primary key. e.g. *itemNo:int.

Enter : between field name and field type to custom field type, e.g. itemName:varchar(255).

Reorder Field

Select a table/entity in Diagram Canvas, then press and hold the SHIFT key. Use  to drag the field to a desired location.

Delete Field

Select a table/entity in Diagram Canvas, then press and hold the SHIFT key. Use  to drag the desired field out of the table/entity.

Add Vertex to Foreign Key/Relation/Line/Arrow

Select a foreign key/relation/line/arrow in Diagram Canvas. Press and hold the SHIFT key and click on it to add vertex.

Delete Vertex on Foreign Key/Relation/Line/Arrow

Select a foreign key/relation/line/arrow in Diagram Canvas. Press and hold the SHIFT key and click on the vertex.

Switch to Hand Mode

Press and hold the SPACE key, then move the diagram.

Select a Page in Print Preview

Press and hold the SHIFT key, then point to a page to show the page number.

Press and hold the SHIFT key, then click a page to jump to the corresponding page in Diagram Canvas.

Chapter 15 - Hot Keys

Model Hot Keys

Keys	Action
CTRL+N	New Model
CTRL+D	New Diagram in Model
CTRL+S	Save Model
CTRL+Z	Undo
CTRL+Y	Redo
CTRL+X	Cut
CTRL+C	Copy
CTRL+V	Paste
CTRL+SHIFT+V	Paste from Clipboard Stack
F11	Full Screen
CTRL+P	Print
ESC	Select
H	Move Diagram
T	New Table/Entity
V	New View
R	New Foreign Key/Relation
A	New Label
N	New Note
I	New Image
L	New Layer
CTRL+B	Bold Selected Table, Entity, View, Foreign Key, Relation or Shape
CTRL++ or CTRL+Mousewheel Up	Zoom In
CTRL+- or CTRL+Mousewheel Down	Zoom Out
CTRL+0	Reset Zoom
ALT+RIGHT	Next Diagram
CTRL+TAB	Next Window

Chapter 16 - Trace Logs

Log Files

Navicat Data Modeler provides number of log files to keep track on the actions have been performed in Navicat Data Modeler and they are located in the **logs** directory, e.g. C:\Users\Guest\Documents\Navicat Data Modeler\logs\. You are allowed to change the log files location under [Options](#).

File	Description
history.log	Store the statements or scripts of all operations executed over databases and database objects in Navicat Data Modeler. Note: This log will be overwritten while Navicat Data Modeler is being restarted.
navicat_log.txt	Store information to assist with tracking down any problems in Navicat Data Modeler. You can enable this log in Options . Note: This log will be overwritten while Navicat Data Modeler is being restarted.